

RNAV (GPS) RWY 10

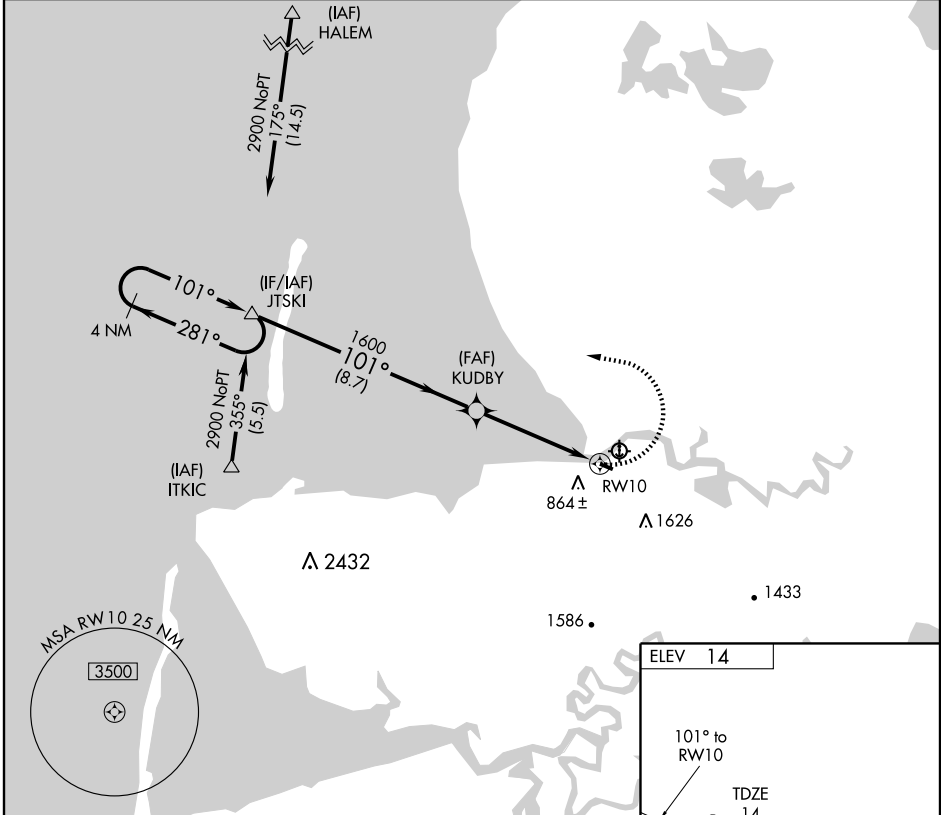
SCAMMON BAY (SCM) (PACM)

APP CRS 101°	Rwy Idg TDZE Apt Elev	3000 14 14
------------------------	-----------------------------	---------------------------------------

⚠ Circling NA south of Rwy 10-28. DME/DME RNP-0.3 NA. Visibility reduction by helicopters NA. VDP NA when using Hooper Bay altimeter setting. When local altimeter setting not received, use Hooper Bay altimeter setting and increase all MDA 360 feet.

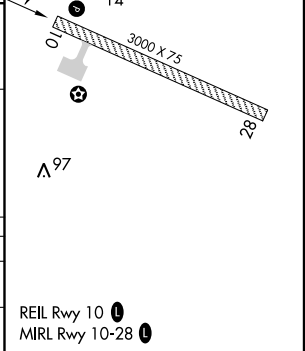
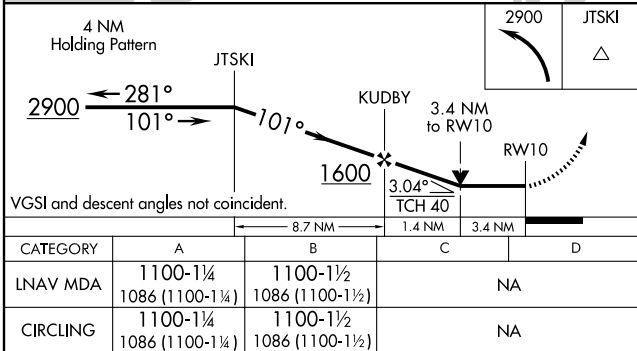
⚠ MISSED APPROACH: Climbing left turn to 2900 direct JTSKI and hold.

ASOS 118.425	ANCHORAGE CENTER 124.5 226.8	UNICOM 123.0 (CTAF) 0
------------------------	--	---------------------------------



AK, 22 OCT 2009 to 17 DEC 2009

AK, 22 OCT 2009 to 17 DEC 2009



REIL Rwy 10 0
MIRL Rwy 10-28 0