

KALSKAG, ALASKA

AL-9461 (FAA)

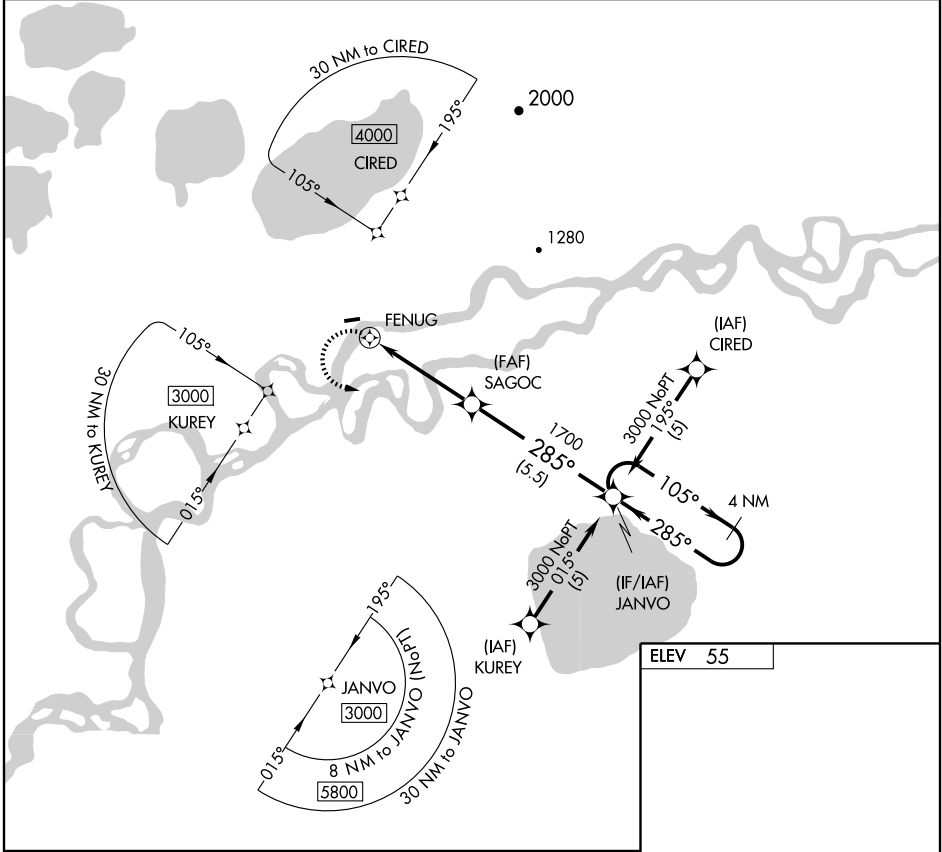
RNAV (GPS)-A KALSKAG (KLG)(PALG)

APP CRS 285°	Rwy Idg TDZE Apt Elev	N/A N/A 55
------------------------	-----------------------------	---------------------------------------

⚠ Circling NA northwest of Rwy 6-24. DME/DME RNP-0.3 NA.
⚠ If local altimeter setting not received, use ANIAK altimeter setting and increase all MDA's 60 feet.

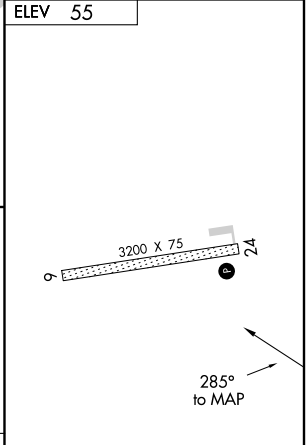
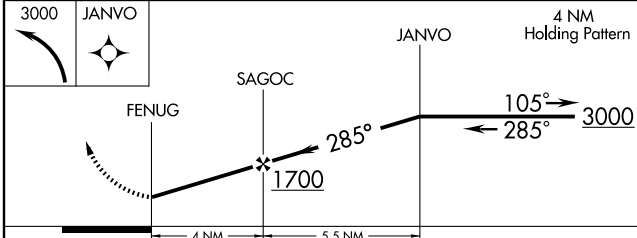
MISSED APPROACH: Climbing left turn to 3000 direct JANVO WP and hold.

ASOS 119.025	ANCHORAGE CENTER 118.15 251.05	UNICOM 122.8 (CTAF) 0
------------------------	--	---------------------------------



AK, 22 OCT 2009 to 17 DEC 2009

AK, 22 OCT 2009 to 17 DEC 2009



CATEGORY	A	B	C	D
CIRCLING	540-1	485 (500-1)	NA	NA

MIRL Rwy 6-24 0

KALSKAG, ALASKA
Orig 07130

61° 32' N-160° 20' W

KALSKAG (KLG)(PALG)
RNAV (GPS)-A