

STANLEY, NORTH DAKOTA

AL-9455 (FAA)

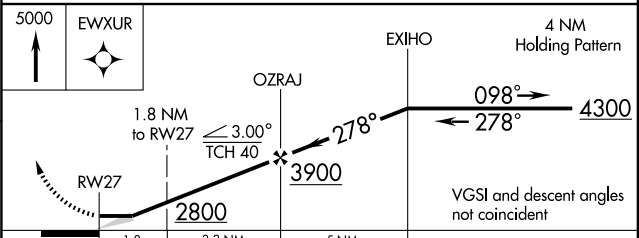
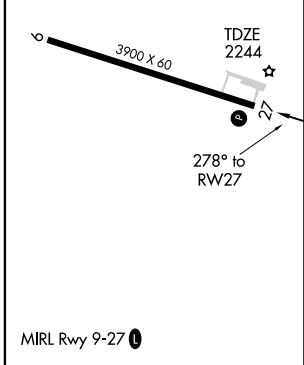
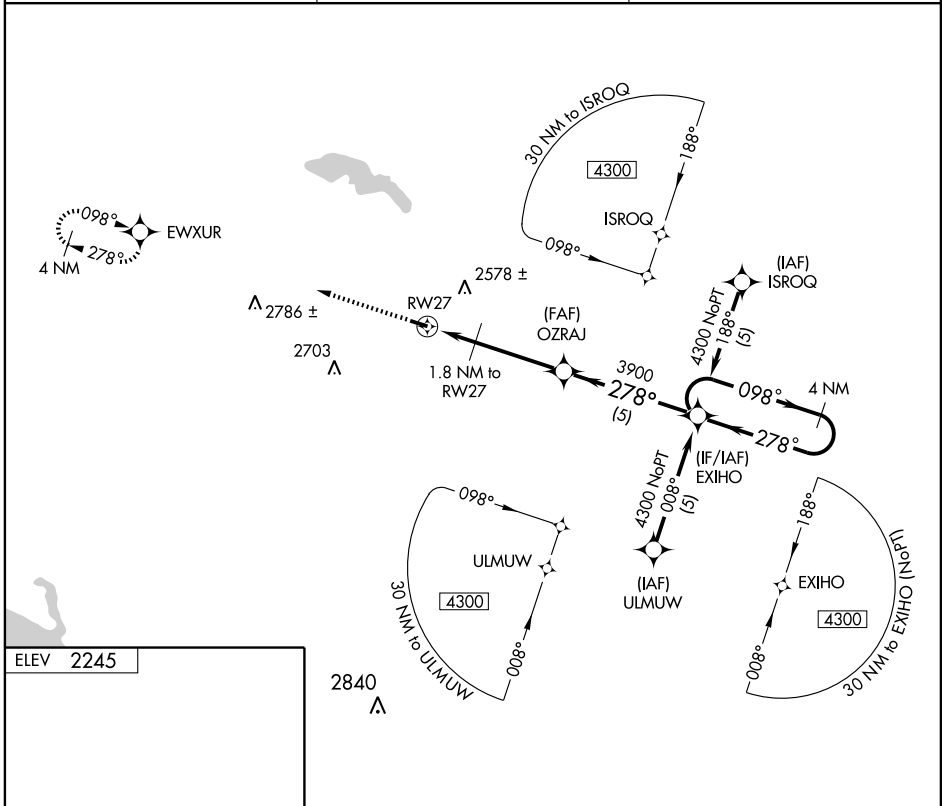
# RNAV (GPS) RWY 27

STANLEY MUNI (Ø8D)

APP CRS <b>278°</b>	Rwy Idg <b>3900</b>
	TDZE <b>2244</b>
	Apt Elev <b>2245</b>

**▲ NA** Use Minot altimeter setting. GPS or RNP-0.3 required. DME/DME RNP-0.3 NA. MISSED APPROACH: Climb to 5000 direct EWXUR WP and hold.

AWOS-3 <b>121.1</b>	MINNEAPOLIS CENTER <b>127.6 279.6</b>	CTAF <b>122.9</b>
------------------------	--	----------------------



CATEGORY	A	B	C	D
LNAV MDA	2740-1	496 (500-1)	NA	
CIRCLING	2880-1	635 (700-1)	NA	

STANLEY, NORTH DAKOTA  
Orig 09015

48° 18' N - 102° 24' W

# RNAV (GPS) RWY 27

NC-1, 22 OCT 2009 to 19 NOV 2009

NC-1, 22 OCT 2009 to 19 NOV 2009