

RNAV (GPS) RWY 2

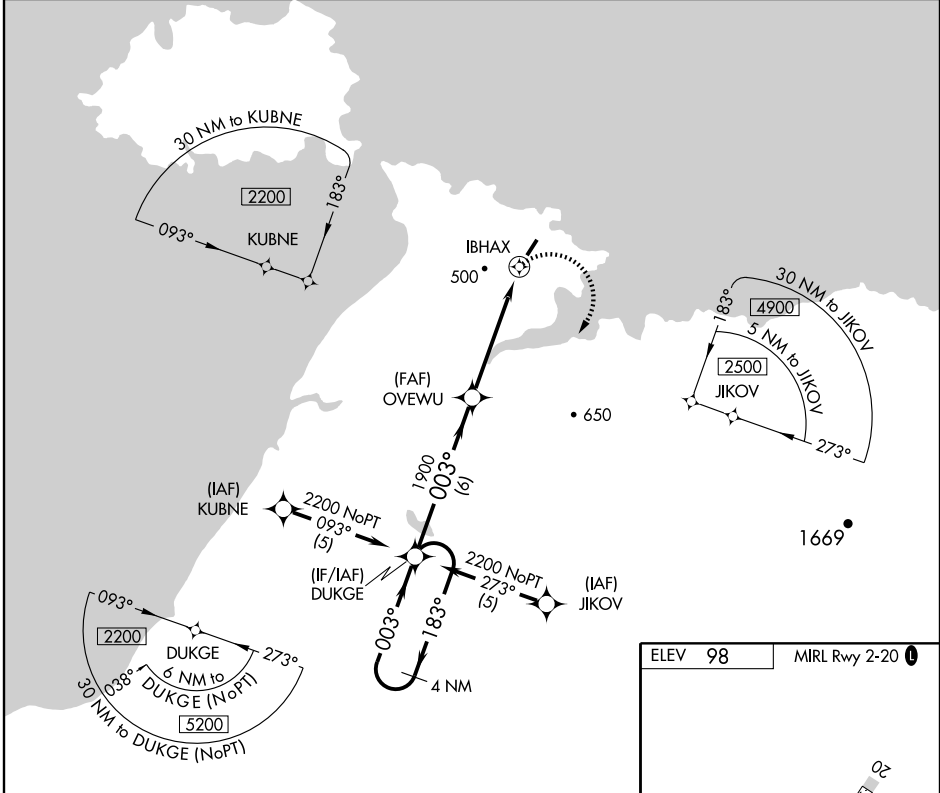
ST MICHAEL (SMK) (PAMK)

APP CRS 003°	Rwy Idg 4001
	TDZE 98
	Apt Elev 98

⚠ If local altimeter setting not received, use Unalakeet altimeter setting and increase all MDAs 120 feet. Circling NA west of Rwy 2-20. DME/DME RNP-0.3 NA.
⚠ *VDP NA with Unalakeet altimeter setting.

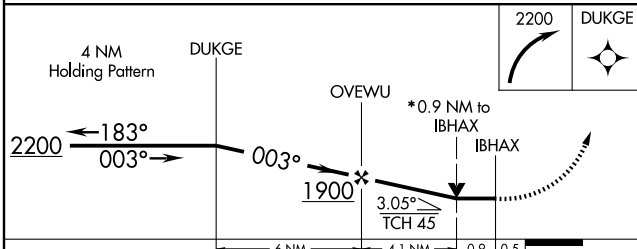
MISSED APPROACH:
 Climbing right turn to 2200 direct DUKGE and hold.

ASOS 119.275	ANCHORAGE CENTER 124.0	NOME RADIO 122.30	UNICOM 122.8 (CTAF) 0
------------------------	----------------------------------	-----------------------------	---------------------------------



AK, 22 OCT 2009 to 17 DEC 2009

AK, 22 OCT 2009 to 17 DEC 2009



ELEV 98	MIRL Rwy 2-20 0
---------	-----------------

CATEGORY	A	B	C	D
LNVA MDA	580-1	482 (500-1)	580-1¼ 482 (500-1¼)	580-1½ 482 (500-1½)
CIRCLING	580-1	482 (500-1)	580-1½ 482 (500-1½)	660-2 562 (600-2)