

LOC/DME I-PBX 109.7 Chan 34	APP CRS 273°	Rwy Idg 4650 TDZE 1466 Apt Elev 1473
-------------------------------------------------	------------------------	-----------------------------------------------------------------

ILS or LOC/DME RWY 27
PIKEVILLE / PIKE COUNTY-HATCHER FIELD (P.BX)

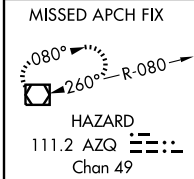
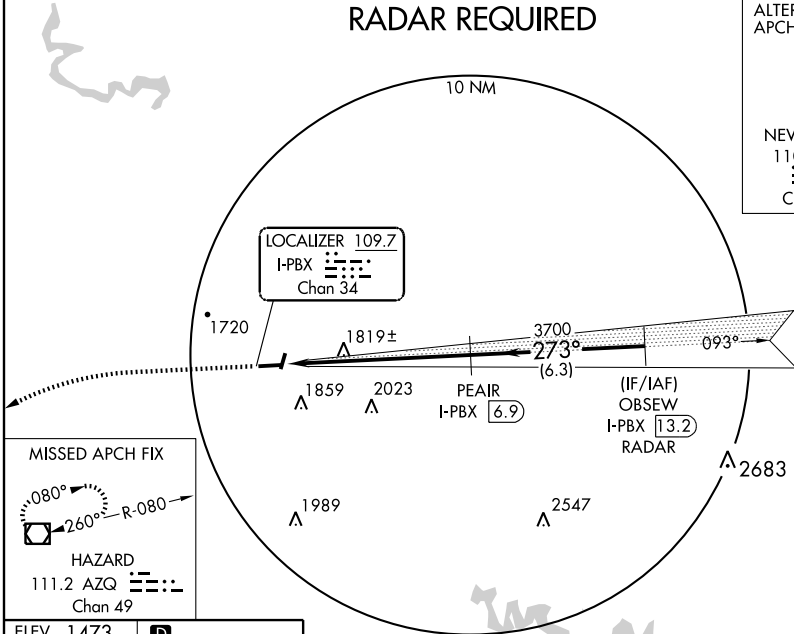
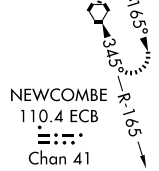
▽ Visibility reduction by helicopters NA. When local altimeter setting not received, use Jackson altimeter setting and increase S-ILS 27 DA to 1762 and all MDA 100 feet;
△ NA increase S-LOC 27 visibility Cat B ¼ mile and Cat C ½ mile; increase Circling visibility Cat B and C ¼ mile.

MISSED APPROACH: Climb to 3000 then climbing left turn to 4000 direct AZQ VOR/DME and hold.

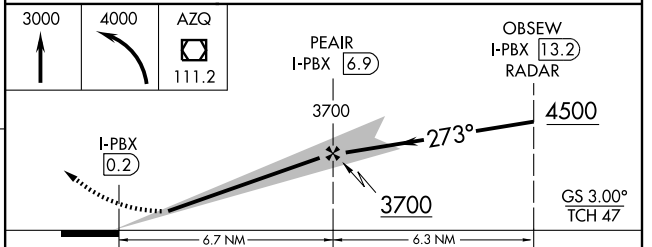
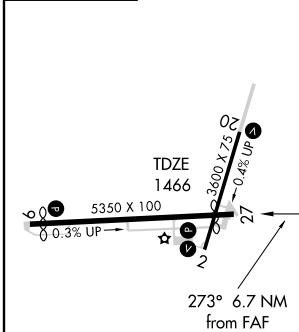
AWOS-3 121.225	INDIANAPOLIS CENTER 126.575 257.850	UNICOM 122.8 (CTAF) 0
--------------------------	-----------------------------------------------	---------------------------------

RADAR REQUIRED

ALTERNATE MISSED APCH FIX



ELEV **1473** **D**



CATEGORY	A	B	C	D
S-ILS 27	1666-1 200 (200-1)			NA
S-LOC 27	2120-1	654 (700-1)	2120-1¾ 654 (700-1¾)	NA
CIRCLING	2120-1	647 (700-1)	2160-2 687 (700-2)	NA

MIRL Rwy 2-20 and 9-27 **0**
REIL Rwy 2, 9, 20 and 27 **0**

SE-1, 22 OCT 2009 to 19 NOV 2009

SE-1, 22 OCT 2009 to 19 NOV 2009