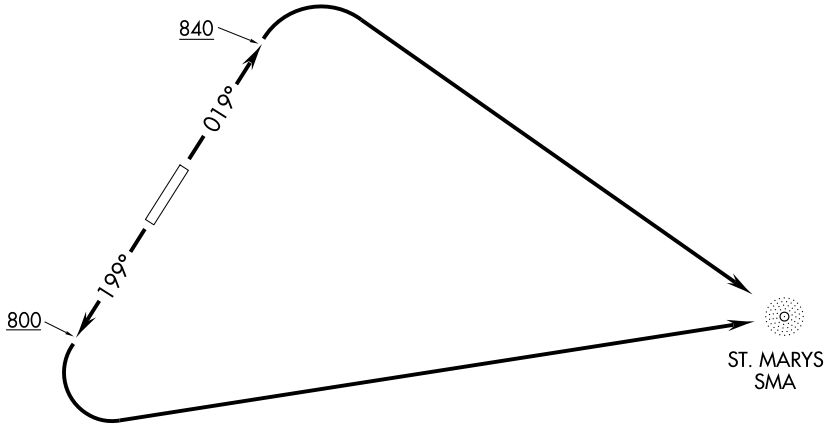


# ST. MARYS ONE DEPARTURE (RNAV)

ANCHORAGE CENTER  
124.0  
ASOS  
118.35



AK, 22 OCT 2009 to 17 DEC 2009

AK, 22 OCT 2009 to 17 DEC 2009

### TAKE-OFF MINIMUMS

Rwy 2, 20: Standard.

NOTE: GPS required.

NOTE: RNAV 1.

### TAKE-OFF OBSTACLE NOTES

Rwy 2: Vehicle on road abeam DER, 250' left of centerline, 15' AGL/364' MSL.

Rwy 20: Bushes beginning 100' from DER, 35' right of centerline, up to 15' AGL/314' MSL.

Bushes beginning 140' from DER, 124' left of centerline, up to 15' AGL/314' MSL.

NOTE: Chart not to scale.



### DEPARTURE ROUTE DESCRIPTION

TAKE-OFF RUNWAY 2: Climb heading 019° to 840, then climbing right turn direct SMA NDB, Thence....

TAKE-OFF RUNWAY 20: Climb heading 199° to 800, then climbing left turn direct SMA NDB, Thence....

....Maintain 3000 or ATC assigned altitude.