

RNAV (GPS) RWY 20

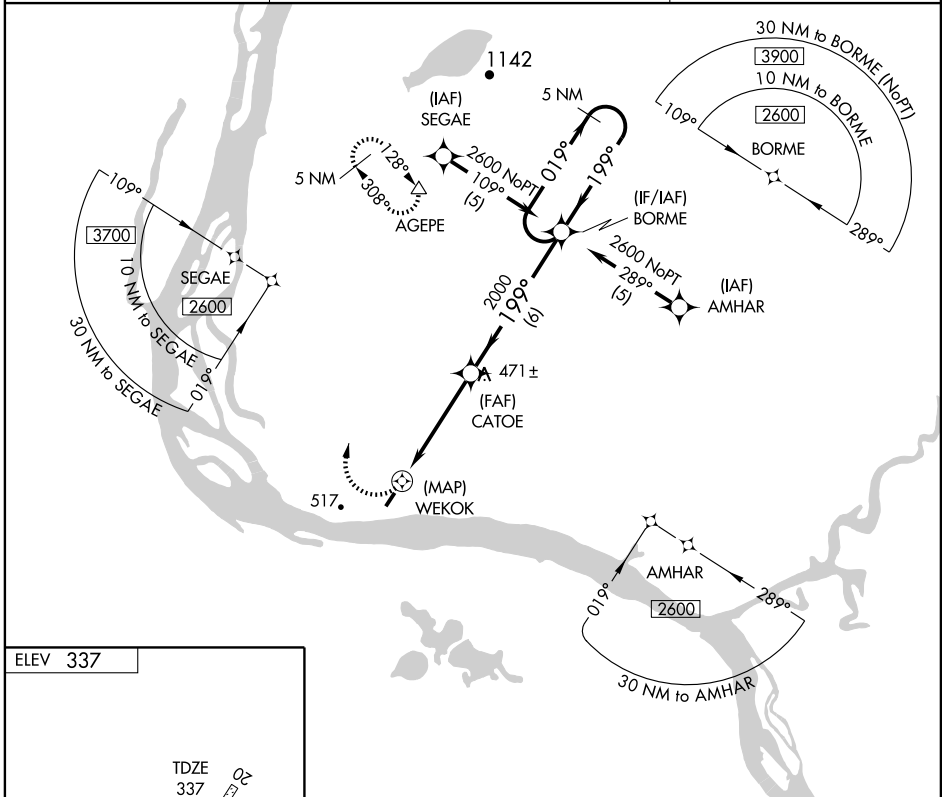
MOUNTAIN VILLAGE (MOU) (PAMO)

APP CRS 199°	Rwy Idg 3500 TDZE 337 Apt Elev 337
------------------------	---

▼ DME/DME RNP-0.3 NA. If local altimeter setting not received, use St. Mary's altimeter setting and increase all MDAs 40 feet.
▲ VDP NA with St. Mary's altimeter setting.

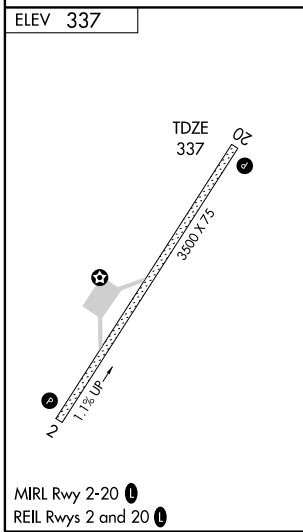
MISSED APPROACH: Climbing right turn to 3000 direct AGEPE and hold.

ASOS 118.35	ANCHORAGE CENTER 124.0	CTAF 122.9
-----------------------	----------------------------------	----------------------



AK, 22 OCT 2009 to 17 DEC 2009

AK, 22 OCT 2009 to 17 DEC 2009



3000	AGEPE	BORME 5 NM Holding Pattern			
0.7 NM to WEKOK		CATOE		019° → 2600	
WEKOK		3.05° TCH 30		← 199°	
0.5		3.9 NM		6 NM	
CATEGORY	A	B	C	D	
LNAV MDA	740-1	403 (500-1)	NA		
CIRCLING	740-1	800-1	NA		
	403 (500-1)	463 (500-1)			

VGSI and descent angles not coincident.