

RNAV (GPS) RWY 2

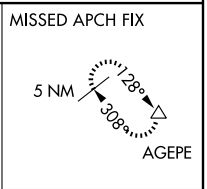
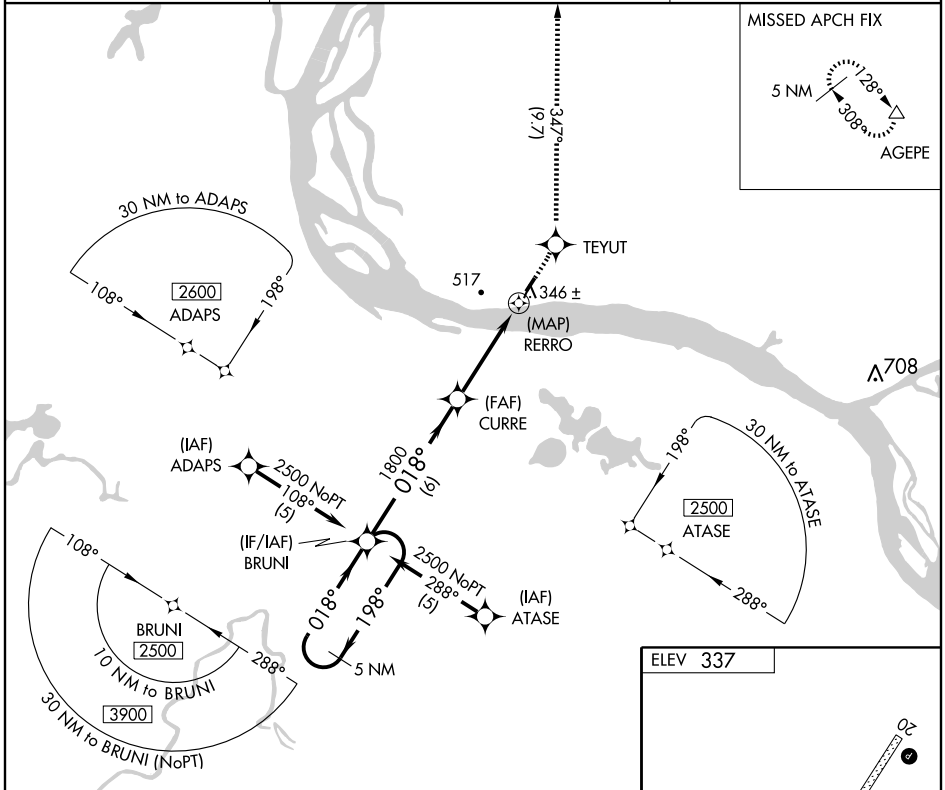
MOUNTAIN VILLAGE (MOU) (PAMO)

APP CRS 018°	Rwy Idg 3500 TDZE 332 Apt Elev 337
------------------------	---

⚠ DME/DME RNP-0.3 NA.
⚠ If local altimeter setting not received, use St. Mary's altimeter setting and increase all MDAs 40 feet.

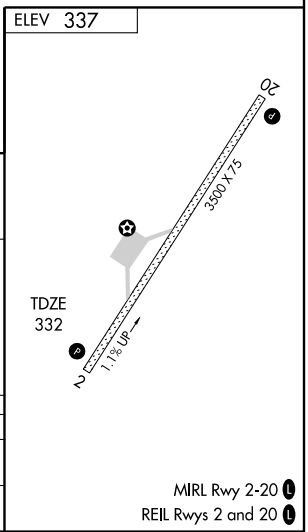
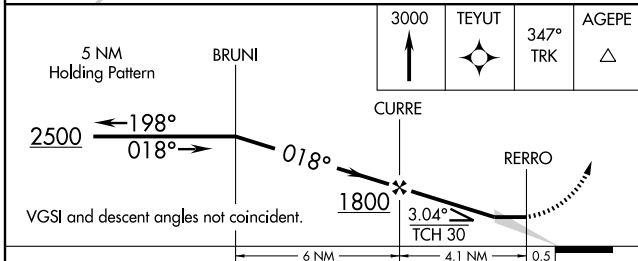
MISSED APPROACH: Climb to 3000 direct TEYUT and via 347° track to AGEPE and hold.

ASOS 118.35	ANCHORAGE CENTER 124.0	CTAF 122.9
-----------------------	----------------------------------	----------------------



AK, 22 OCT 2009 to 17 DEC 2009

AK, 22 OCT 2009 to 17 DEC 2009



CATEGORY	A	B	C	D
LNVA MDA	600-1	268 (300-1)	NA	
CIRCLING	700-1 363 (400-1)	800-1 463 (500-1)	NA	