

PINE RIVER, MINNESOTA

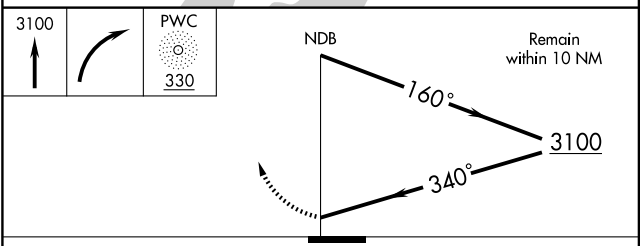
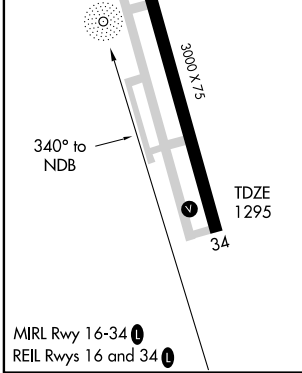
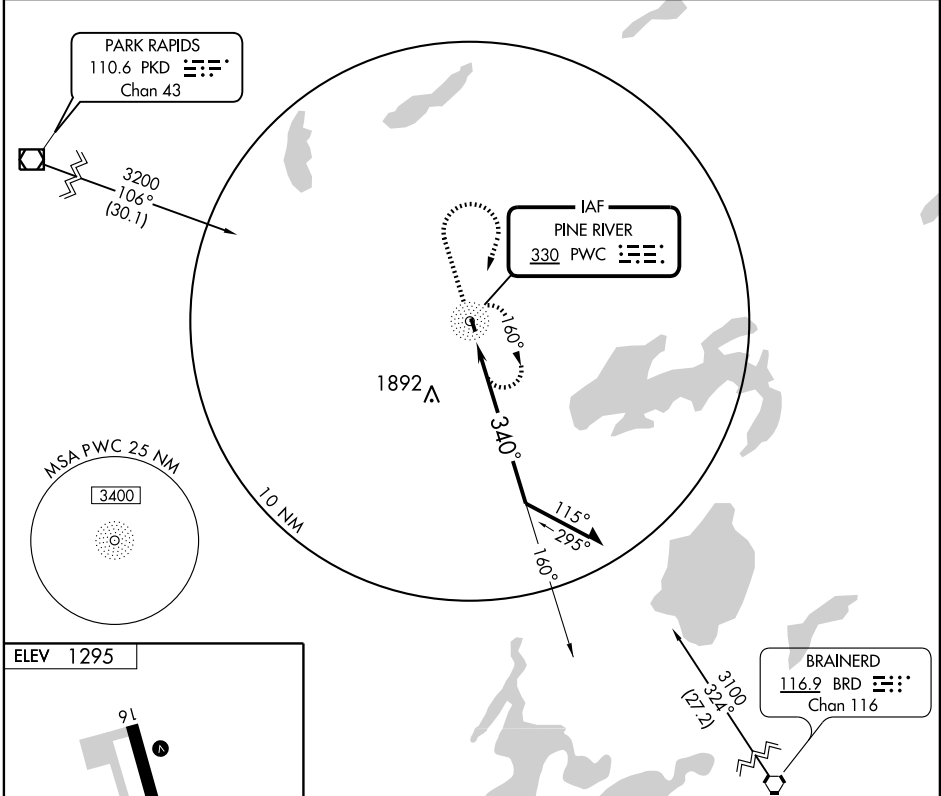
AL-9441 (FAA)

NDB RWY 34
PINE RIVER RGNL (PWC)

NDB PWC 330	APP CRS 340°	Rwy Idg TDZE Apt Elev	3000 1295 1295
-----------------------	------------------------	-----------------------------	---

▲ NA MISSED APPROACH: Climb to 3100 then right turn direct PWC NDB and hold.

ASOS-3 118.525	MINNEAPOLIS CENTER 118.05 239.0	CTAF 122.9
--------------------------	---	----------------------



CATEGORY	A	B	C	D
S-34	2060-1 765 (800-1)	2060-1¼ 765 (800-1¼)	2060-2¼ 765 (800-2¼)	NA
CIRCLING	2060-1 765 (800-1)	2060-1¼ 765 (800-1¼)	2060-2¼ 765 (800-2¼)	NA

PINE RIVER, MINNESOTA
Amdt 1 09015

46°43'N-94°23'W

PINE RIVER RGNL (PWC)
NDB RWY 34

NC-1, 22 OCT 2009 to 19 NOV 2009

NC-1, 22 OCT 2009 to 19 NOV 2009