

BEAVER, UTAH

AL-9437 (FAA)

RNAV (GPS)-A

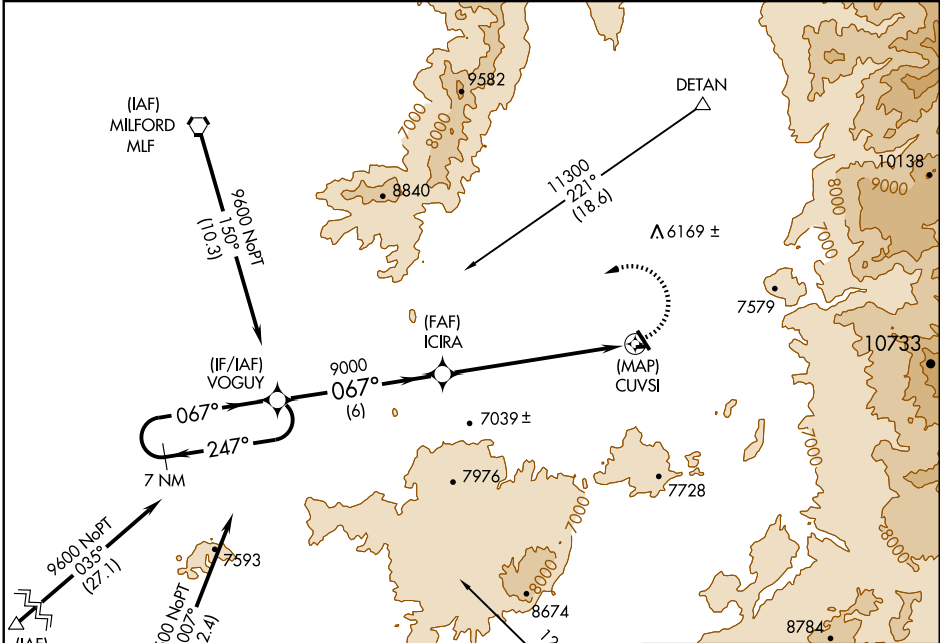
BEAVER MUNI (U52)

APP CRS	Rwy Idg	N/A
067°	TDZE	N/A
	Apt Elev	5860

NA DME/DME RNP-0.3 NA.
If local altimeter setting not received, use Milford Muni altimeter setting and increase all MDAs 180 feet.

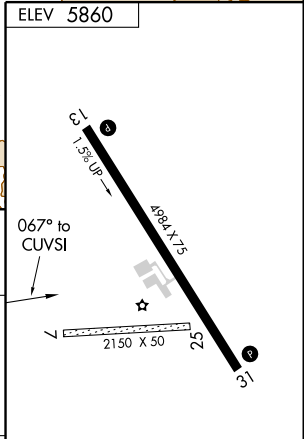
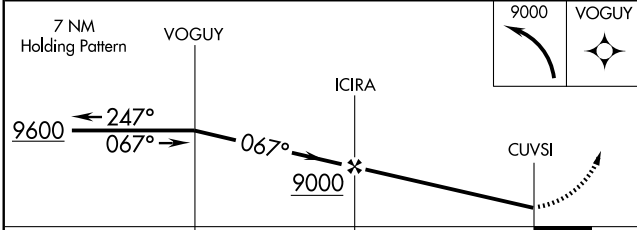
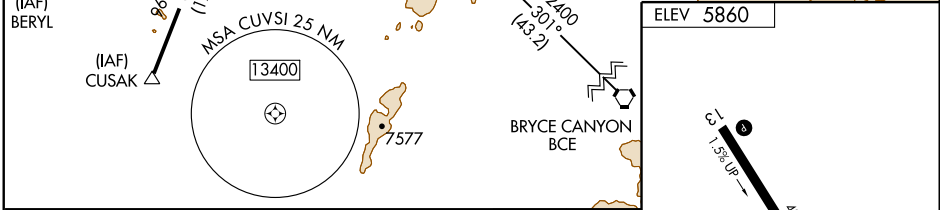
MISSED APPROACH: Climbing left turn to 9600 direct VOGUY and hold.

AWOS-3 119.925	SALT LAKE CITY CENTER 125.575 379.275	CTAF 122.90
--------------------------	---	-----------------------



SW-4, 22 OCT 2009 to 19 NOV 2009

SW-4, 22 OCT 2009 to 19 NOV 2009



CATEGORY	A	B	C	D
CIRCLING	7080-1¼ 1220 (1300-1¼)	7080-1½ 1220 (1300-1½)	7080-3 1220 (1300-3)	NA

MIRL Rwy 13-31 **0**
REIL Rwy 13 and 31 **0**

BEAVER, UTAH
Orig 09239

38°14'N-112°41'W

BEAVER MUNI (U52)

RNAV (GPS)-A