

SALEM, MISSOURI

AL-9436 (FAA)

RNAV (GPS) RWY 17

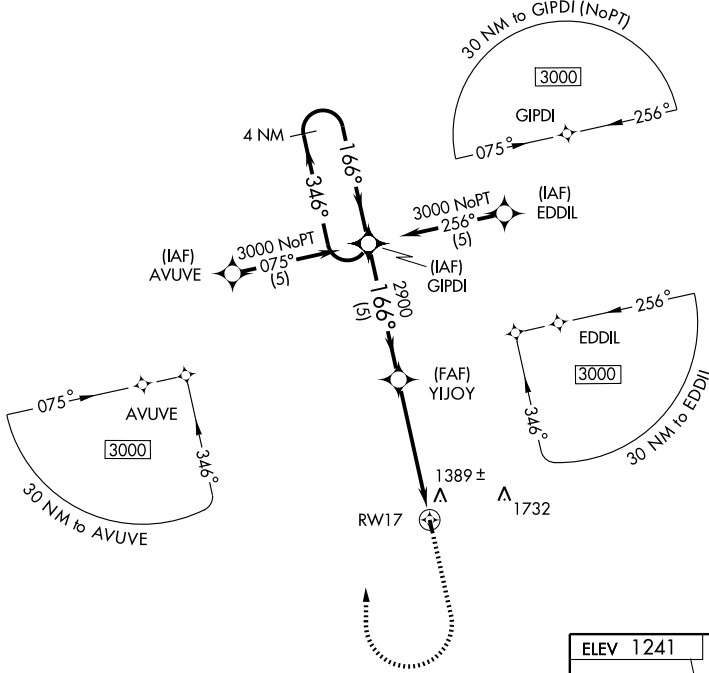
SALEM MEMORIAL (K33)

| | |
|------------------------|---|
| APP CRS 166° | Rwy Idg 2998 TDZE 1241 Apt Elev 1241 |
|------------------------|---|

▲ NA Use Rolla National altimeter setting.
GPS or RNP -0.3 required. DME/DME RNP-0.3 NA.

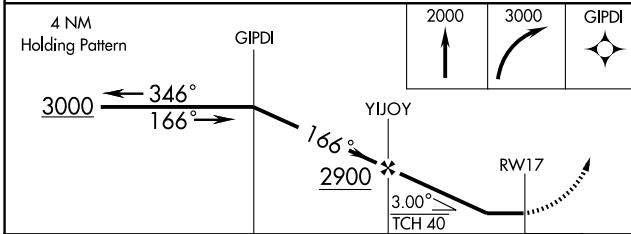
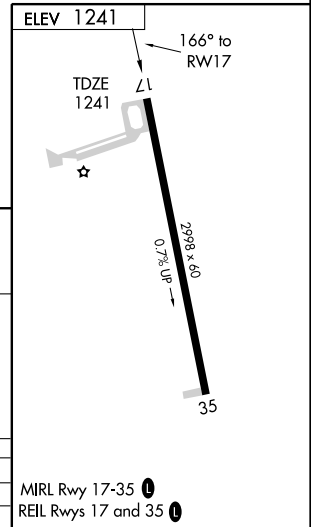
MISSED APPROACH: Climb to 2000 then climbing right turn to 3000 direct GIPDI WP and hold.

| | |
|--|----------------------|
| KANSAS CITY CENTER 128.35 284.67 | CTAF 122.9 |
|--|----------------------|



NC-3, 22 OCT 2009 to 19 NOV 2009

NC-3, 22 OCT 2009 to 19 NOV 2009



| | | | | |
|----------|--------|-------------|---|----|
| CATEGORY | A | B | C | D |
| LNAV MDA | 1740-1 | 499 (500-1) | | NA |
| CIRCLING | 1840-1 | 599 (600-1) | | NA |

MIRL Rwy 17-35
REIL Rwy 17 and 35

SALEM, MISSOURI
Orig 07298

37°37'N - 91°36'W

RNAV (GPS) RWY 17