

WAVERLY, OHIO

AL-9431 (FAA)

RNAV (GPS) RWY 25

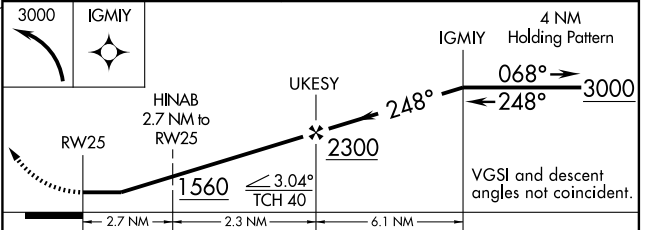
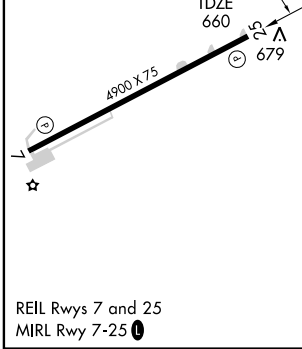
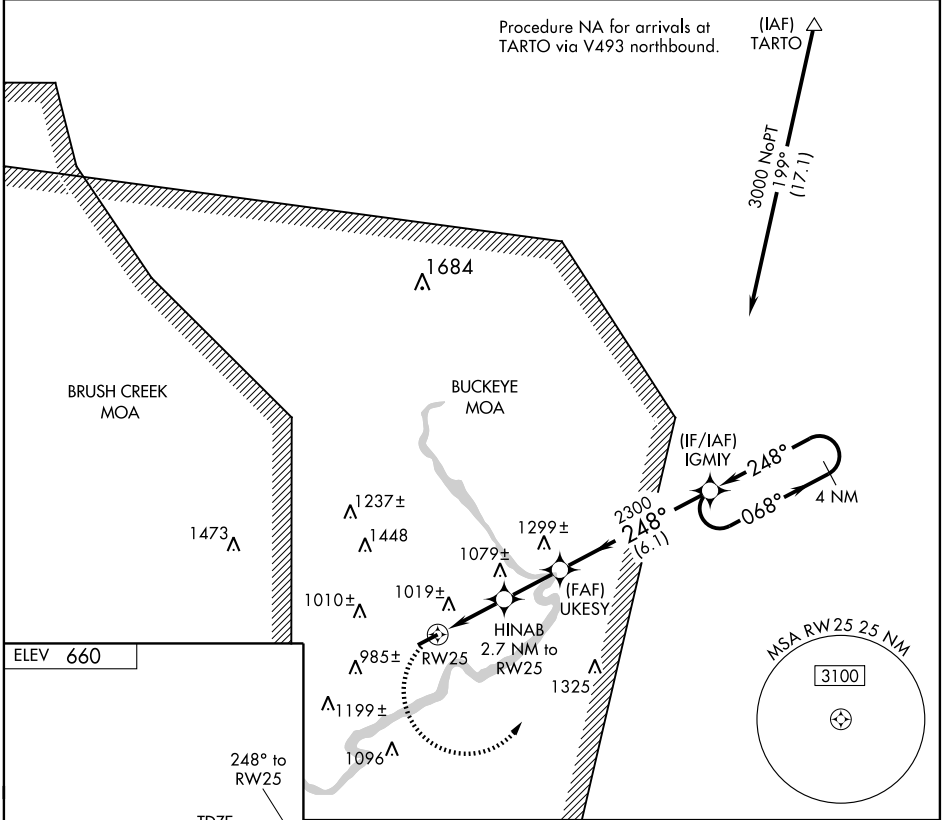
WAVERLY/PIKE COUNTY (E.O.P)

APP CRS 248°	Rwy Idg 4900
	TDZE 660
	Apt Elev 660

NA DME/DME RNP-0.3 NA. Visibility reduction by helicopters NA. Use Portsmouth altimeter setting; when not received, use Rickenbacker Intl altimeter setting and increase all MDA 60 feet and Circling Cats A, C, and D visibility ¼ mile.

MISSED APPROACH: Climbing left turn to 3000 direct IGMYY and hold.

AWOS-A 118.4	GREATER PORTSMOUTH RGNL AWOS-3 125.175	INDIANAPOLIS CENTER 135.575 290.4	UNICOM 123.0 (CTAF) 0
------------------------	---	---	---------------------------------



CATEGORY	A	B	C	D
LNAV MDA	1340-1	680 (700-1)	1340-2 680 (700-2)	1340-2½ 680 (700-2½)
CIRCLING	1500-1 840 (900-1)	1520-1¼ 860 (900-1¼)	1520-2½ 860 (900-2½)	1520-2¾ 860 (900-2¾)

WAVERLY, OHIO
Orig 9239

39°10'N - 82°56'W

RNAV (GPS) RWY 25

EC-2, 22 OCT 2009 to 19 NOV 2009

EC-2, 22 OCT 2009 to 19 NOV 2009