

WAVERLY, OHIO

AL-9431 (FAA)

NDB EOP	APP CRS	Rwy Idg	4900
385	253°	TDZE	660
		Apt Elev	660

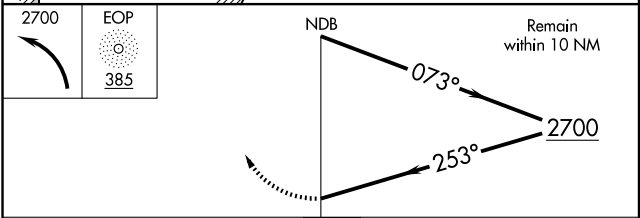
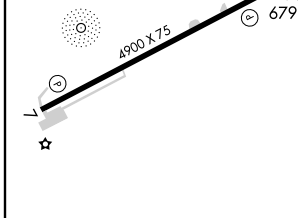
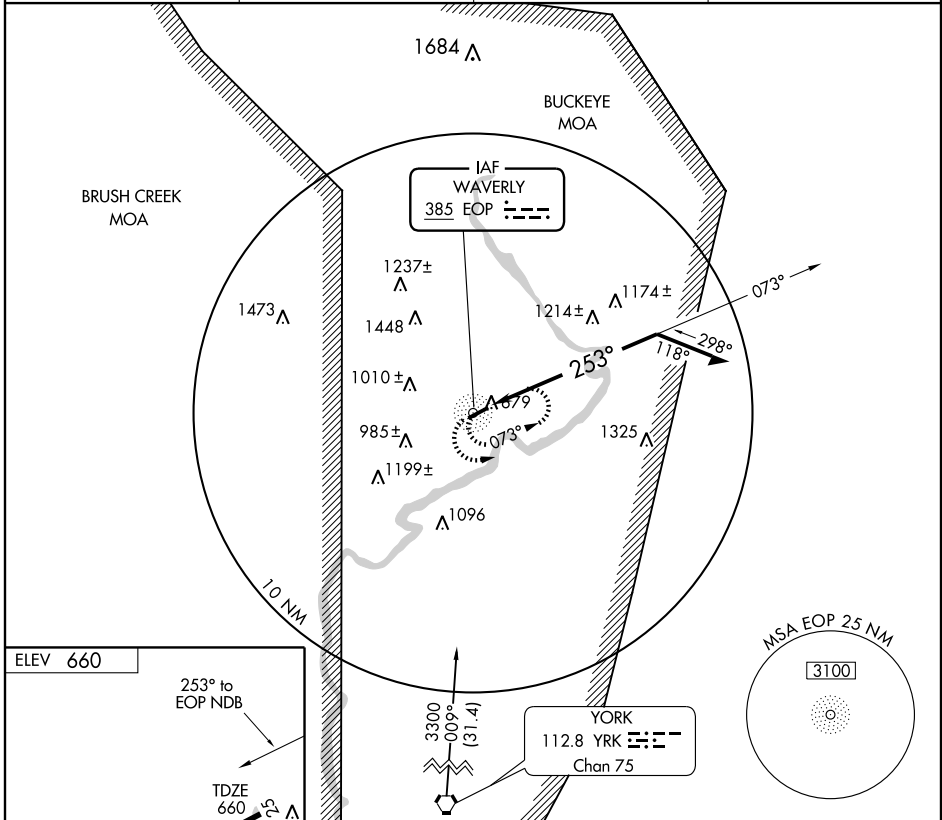
# NDB RWY 25

WAVERLY / PIKE COUNTY (EOP)

▼ Use Greater Portsmouth Rgnl altimeter setting; if not received, use Ross County altimeter setting.

▲ NA MISSED APPROACH: Climbing left turn to 2700 in EOP NDB holding pattern.

AWOS-A <b>118.4</b>	GREATER PORTSMOUTH RGNL AWOS-3 <b>125.175</b>	INDIANAPOLIS CENTER <b>135.575 290.4</b>	UNICOM <b>123.0 (CTAF) 0</b>
------------------------	---	---	---------------------------------



CATEGORY	A	B	C	D
S-25	1620-1¼ 960 (1000-1¼)	1620-1½ 960 (1000-1½)	1620-3	960 (1000-3)
CIRCLING	1620-1¼ 960 (1000-1¼)	1620-1½ 960 (1000-1½)	1620-3	960 (1000-3)

WAVERLY, OHIO  
Amdt 1A 09239

39°10'N - 82°56'W

# NDB RWY 25

EC-2, 22 OCT 2009 to 19 NOV 2009

EC-2, 22 OCT 2009 to 19 NOV 2009