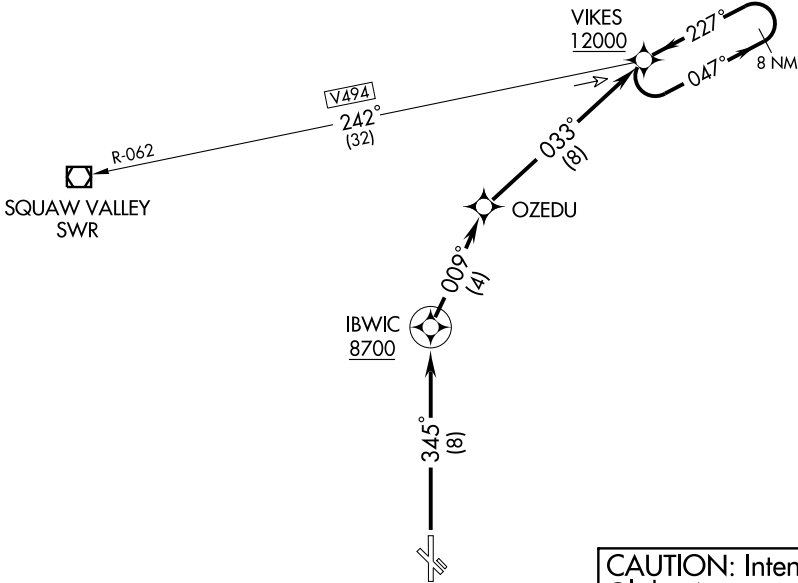


RENO TOWER
118.7 257.8
RENO DEP CON (SOUTH)
119.2 279.55

MUSTANG
FMG



NOTE: 1. GPS Required.
2. RNAV 1

NOTE: Chart not to scale.

DEPARTURE ROUTE DESCRIPTION

TAKE-OFF RUNWAY 34: Climb via 345° course to IBWIC WP, 009° course to OZEDU WP, and 033° course to VIKES WP, then climb in VIKES WP holding pattern (hold NE, left turns, 227° inbound) to cross VIKES WP at or above 12000 before proceeding on course.