

RNAV (GPS) RWY 18

ATMORE MUNI (ØR1)

APP CRS	Rwy Idg	4506
181°	TDZE	287
	Apt Elev	287

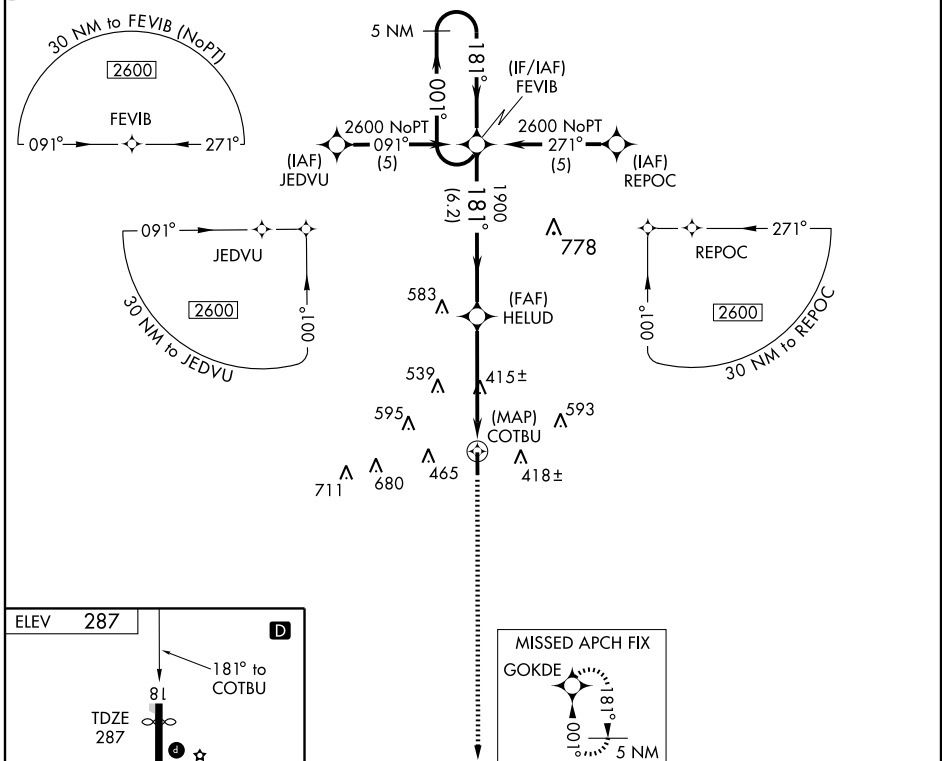
NA DME/DME RNP-0.3 NA. Use Evergreen altimeter setting; if not received, use Pensacola Rgnl altimeter setting and increase all MDAs 40 feet. Procedure NA at night.

MISSED APPROACH: Climb to 2600 direct GOKDE and hold.

EVERGREEN ASOS
133.425

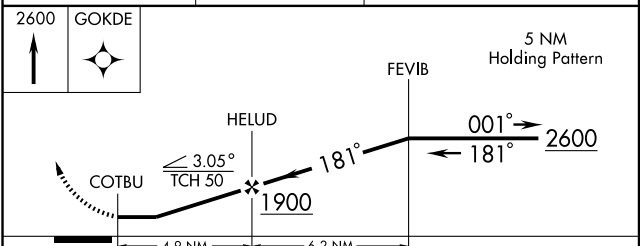
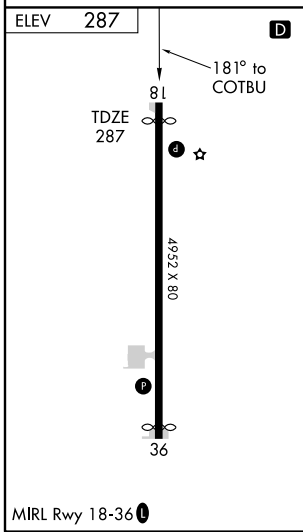
PENSACOLA APP CON
126.85 291.625

UNICOM
122.8 (CTAF) Ø



SE-4, 22 OCT 2009 to 19 NOV 2009

SE-4, 22 OCT 2009 to 19 NOV 2009



CATEGORY	A	B	C	D
LNAV MDA	760-1	473 (500-1)	760-1¼ 473 (500-1¼)	NA
CIRCLING	900-1	613 (700-1)	900-1¾ 613 (700-1¾)	NA