

RNAV (GPS) RWY 35

HINTON MUNI (208)

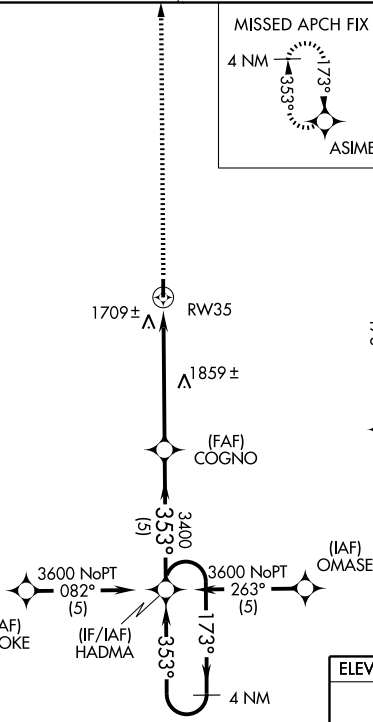
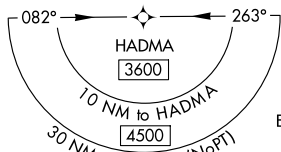
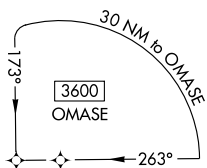
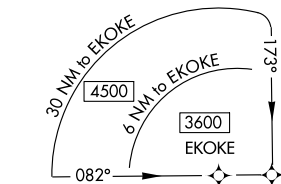
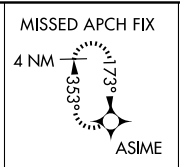
APP CRS 353°	Rwy Idg 4000
	TDZE 1587
	Apt Elev 1587

NA Use Weatherford altimeter setting; when not received procedure NA.
DME/DME RNP-0.3 NA. Baro-VNAV NA.

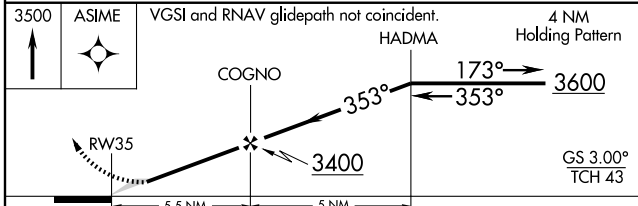
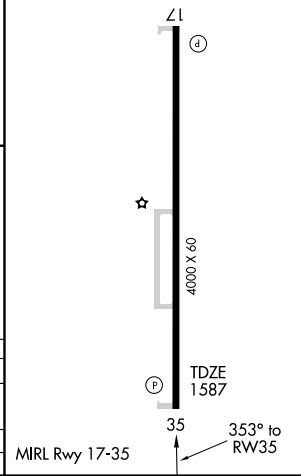
MISSED APPROACH: Climb to 3500 direct ASIME and hold.

FORT WORTH CENTER
128.4 269.375

UNICOM
123.05 (CTAF)



ELEV 1587



CATEGORY	A	B	C	D
LNAV/VNAV DA	2052-1¾	465 (500-1¾)		NA
LNAV MDA	2160-1	573 (600-1)		NA
CIRCLING	2160-1	573 (600-1)		NA

SC-1, 22 OCT 2009 to 19 NOV 2009

SC-1, 22 OCT 2009 to 19 NOV 2009