

RNAV (GPS) RWY 4

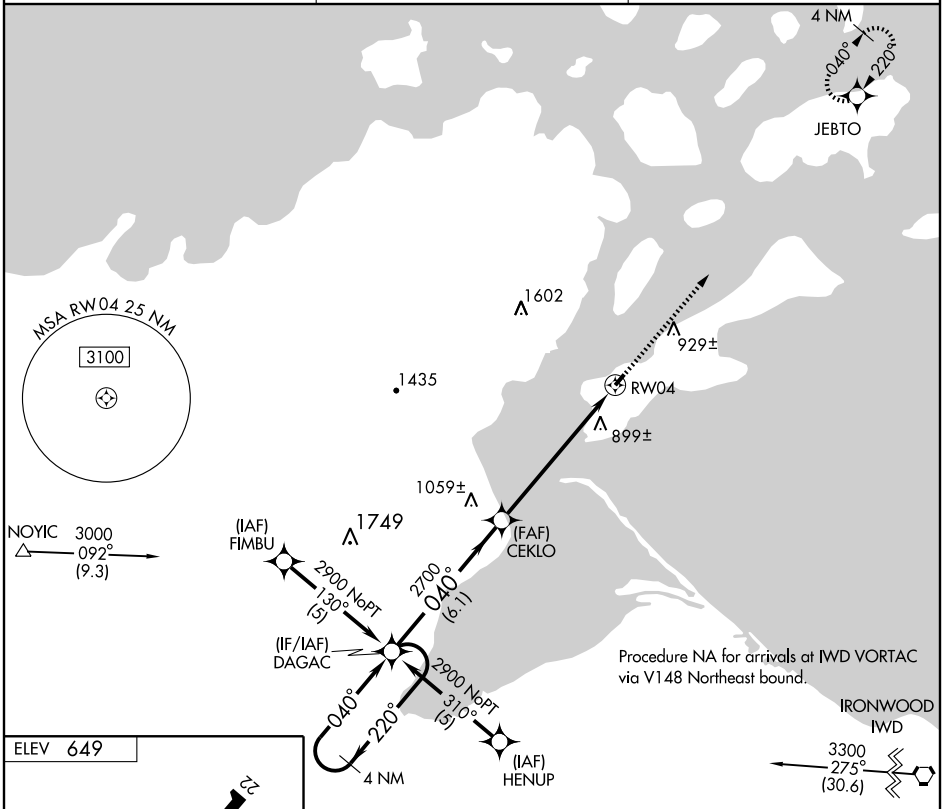
LA POINTE/MADELINE ISLAND (4R.5)

APP CRS	Rwy Idg	3000
040°	TDZE	649
	Apt Elev	649

NA DME/DME RNP-0.3 NA. Visibility reduction by helicopters NA. Use Ashland altimeter setting; when not received, use Superior altimeter setting and increase all MDAs 80 feet and LNAV Cat. C visibility ½ mile, Circling Cat. C visibility ¼ mile.

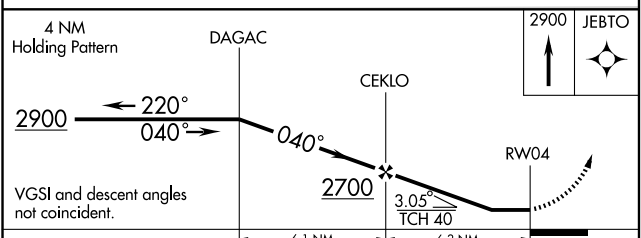
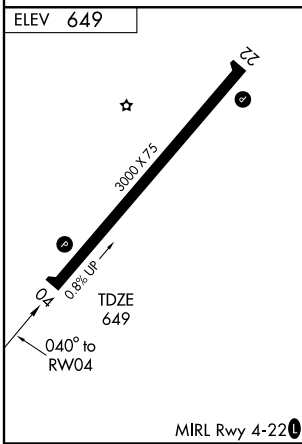
MISSED APPROACH: Climb to 2900 direct JEBTO and hold.

ASHLAND ASOS 126.775	MINNEAPOLIS APP CON 133.55	CTAF 122.9
--------------------------------	--------------------------------------	----------------------



EC-3, 22 OCT 2009 to 19 NOV 2009

EC-3, 22 OCT 2009 to 19 NOV 2009



CATEGORY	A	B	C	D
LNAV MDA	1240-1	591 (600-1)	1240-1½ 591 (600-1½)	NA
CIRCLING	1240-1	591 (600-1)	1280-1¾ 631 (700-1¾)	NA