

BOLIVAR, MISSOURI

AL-9389 (FAA)

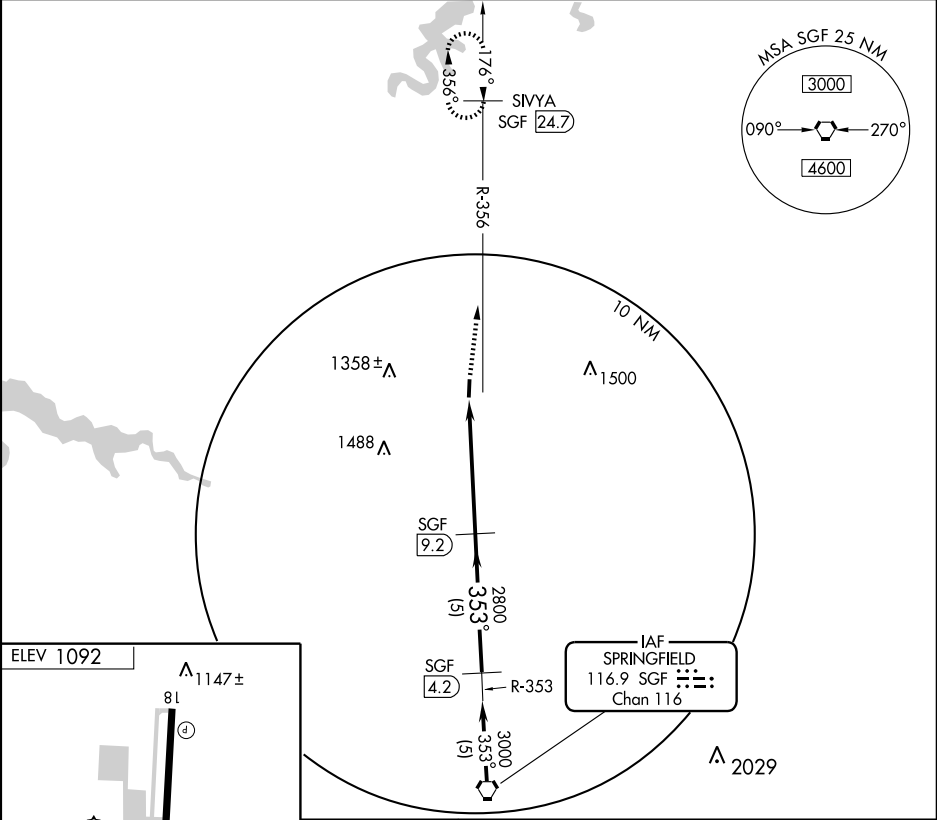
VORTAC SGF 116.9 Chan 116	APP CRS 353°	Rwy Idg TDZE Apt Elev	4000 1092 1092
---	------------------------	-----------------------------	---

VOR/DME RWY 36

BOLIVAR MUNI (M17)

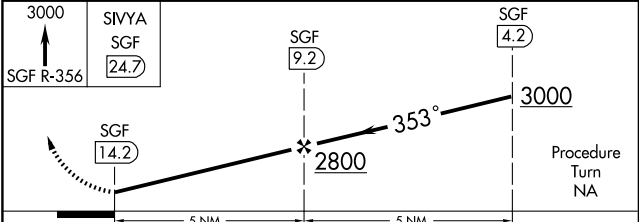
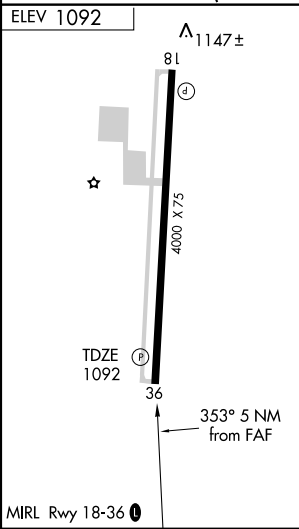
NA Use Springfield-Branson National altimeter setting. MISSED APPROACH: Climb to 3000 via SGF R-356 to SIVYA/SGF 24.7 DME and hold.

SPRINGFIELD APP CON **124.95 318.2** UNICOM **123.0 (CTAF)**



NC-3, 22 OCT 2009 to 19 NOV 2009

NC-3, 22 OCT 2009 to 19 NOV 2009



CATEGORY	A	B	C	D
S-36	1700-1	608 (700-1)		NA
CIRCLING	1700-1	608 (700-1)		NA

BOLIVAR, MISSOURI
Orig 09071

37°36'N-93°21'W

BOLIVAR MUNI (M17) VOR/DME RWY 36