

BOLIVAR, MISSOURI

AL-9389 (FAA)

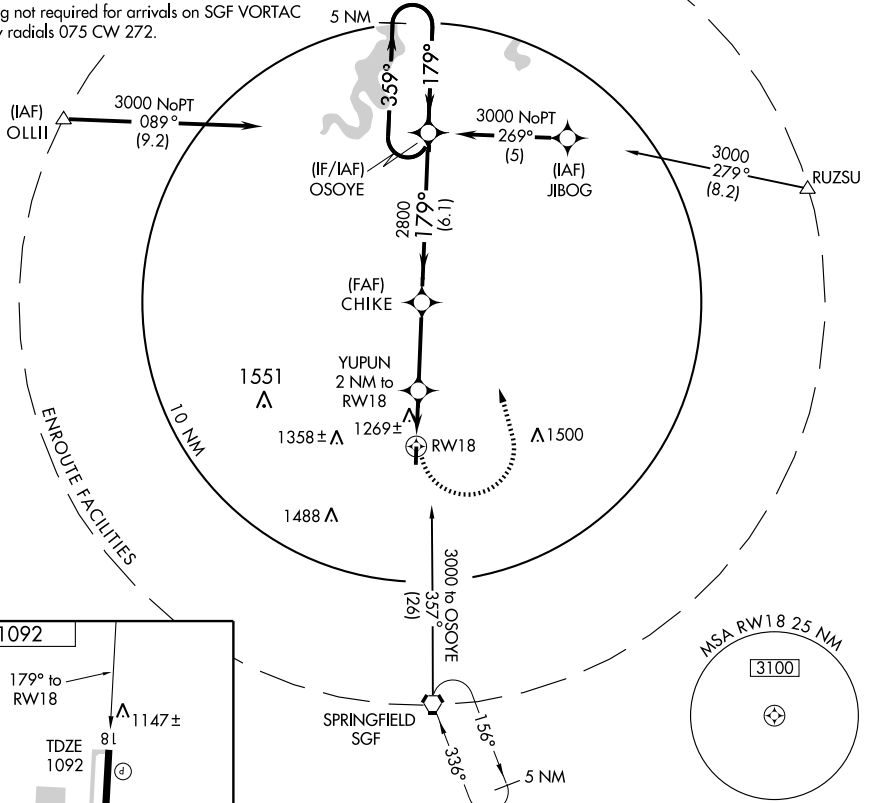
APP CRS	Rwy Idg	4000
179°	TDZE	1092
	Apt Elev	1092

RNAV (GPS) RWY 18

BOLIVAR MUNI (M17)

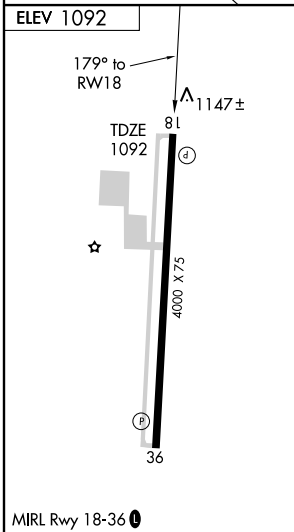
<p>▽ DME/DME RNP: 0.3 NA. △ NA Visibility reduction by helicopters NA. Use Springfield-Branson National altimeter setting.</p>	<p>MISSED APPROACH: Climbing left turn to 3000 direct OSOYE and hold.</p>
<p>SPRINGFIELD APP CON 124.95 318.2</p>	<p>UNICOM 123.0 (CTAF) 0</p>

Holding not required for arrivals on SGF VORTAC airway radials 075 CW 272.



NC-3, 22 OCT 2009 to 19 NOV 2009

NC-3, 22 OCT 2009 to 19 NOV 2009



<p>3000 OSOYE</p>	<p>CHIKE</p>	<p>OSOYE</p>	<p>5 NM Holding Pattern</p>	
<p>YUPUN 2 NM to RW18</p>	<p>3.04° TCH 38</p>	<p>179°</p>	<p>359°</p>	
<p>RW18</p>	<p>1760</p>	<p>2800</p>	<p>3000</p>	
<p>2 NM</p>	<p>3.2 NM</p>	<p>6.1 NM</p>	<p></p>	
CATEGORY	A	B	C	D
LNAV MDA	1600-1	508 (600-1)	1600-1½ 508 (600-1½)	NA
CIRCLING	1660-1	568 (600-1)	1660-1½ 568 (600-1½)	NA

BOLIVAR, MISSOURI
 Orig 07186

37°36'N-93°21'W

RNAV (GPS) RWY 18

BOLIVAR MUNI (M17)