

GUTHRIE CENTER, IOWA

AL-9388 (FAA)

GPS RWY 36

GUTHRIE CENTER/GUTHRIE COUNTY RGNL (GCT)

| | | |
|-------------|----------|-------------|
| APP CRS | Rwy Idg | 3400 |
| 357° | TDZE | 1221 |
| | Apt Elev | 1221 |

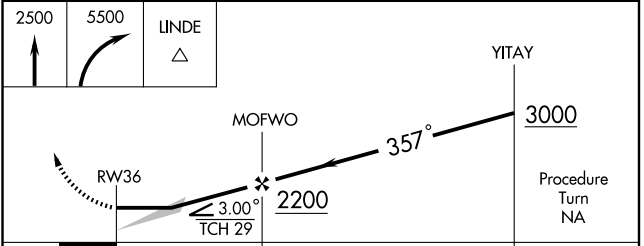
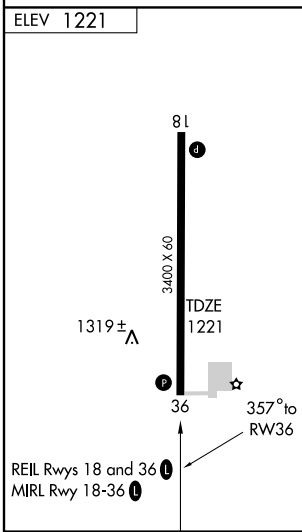
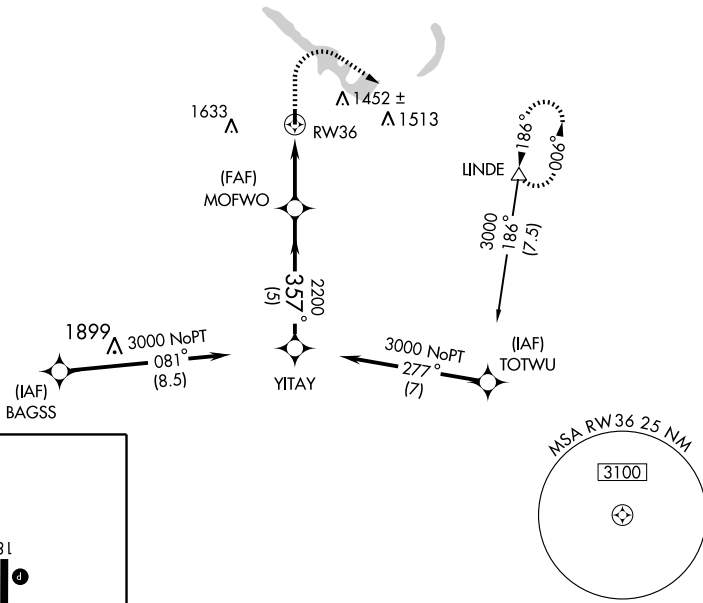
Use Audubon County altimeter setting. MISSED APPROACH: Climb to 2500, then climbing right turn to 5500 direct LINDE Int and hold.

▲ NA

| | |
|--|---------------------------------|
| DES MOINES APP CON 135.2 360.7 | UNICOM 122.8 (CTAF) 0 |
|--|---------------------------------|

NC-3, 22 OCT 2009 to 19 NOV 2009

NC-3, 22 OCT 2009 to 19 NOV 2009



| CATEGORY | A | B | C | D |
|----------|--------|-------------|---|----|
| S-36 | 1640-1 | 419 (500-1) | | NA |
| CIRCLING | 1720-1 | 499 (500-1) | | NA |

GUTHRIE CENTER, IOWA
Orig 09127

GUTHRIE CENTER/ GUTHRIE COUNTY RGNL (GCT)
41°41'N-94°26'W

GPS RWY 36