

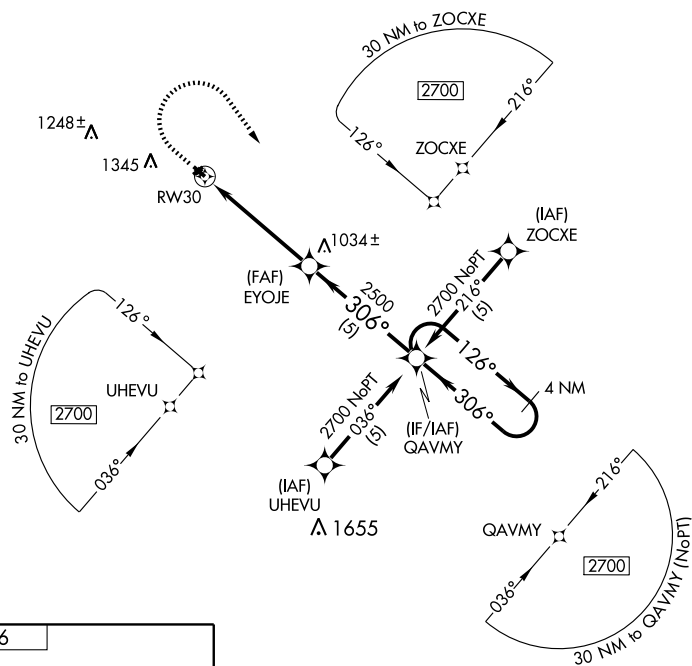
RNAV (GPS) RWY 30

WARREN MUNI (D37)

APP CRS 306°	Rwy Idg TDZE Apt Elev	3205 885 886
------------------------	-----------------------------	---

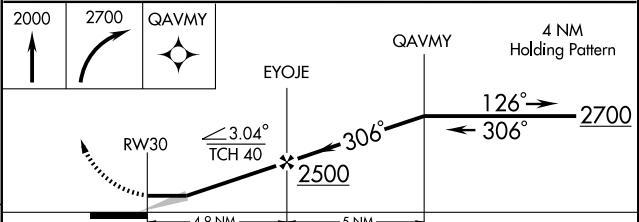
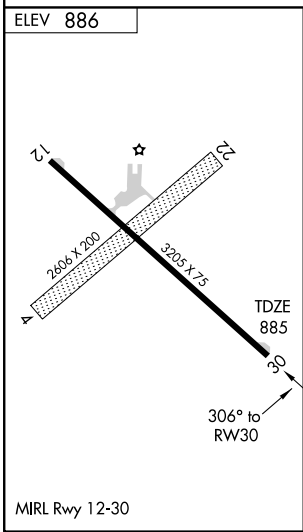
NA Use Crookston Muni-Kirkwood Field altimeter setting. GPS or RNP -0.3 required. DME/DME RNP- 0.3 NA. MISSED APPROACH: Climb to 2000, then climbing right turn to 2700 direct QAVMY WP and hold.

GRAND FORKS APP CON **118.1 318.1** UNICOM **122.8** (CTAF)



NC-1, 22 OCT 2009 to 19 NOV 2009

NC-1, 22 OCT 2009 to 19 NOV 2009



CATEGORY	A	B	C	D
LNAV MDA	1480-1	595 (600-1)	NA	
CIRCLING	1480-1	594 (600-1)	NA	