

RNAV (GPS) RWY 31

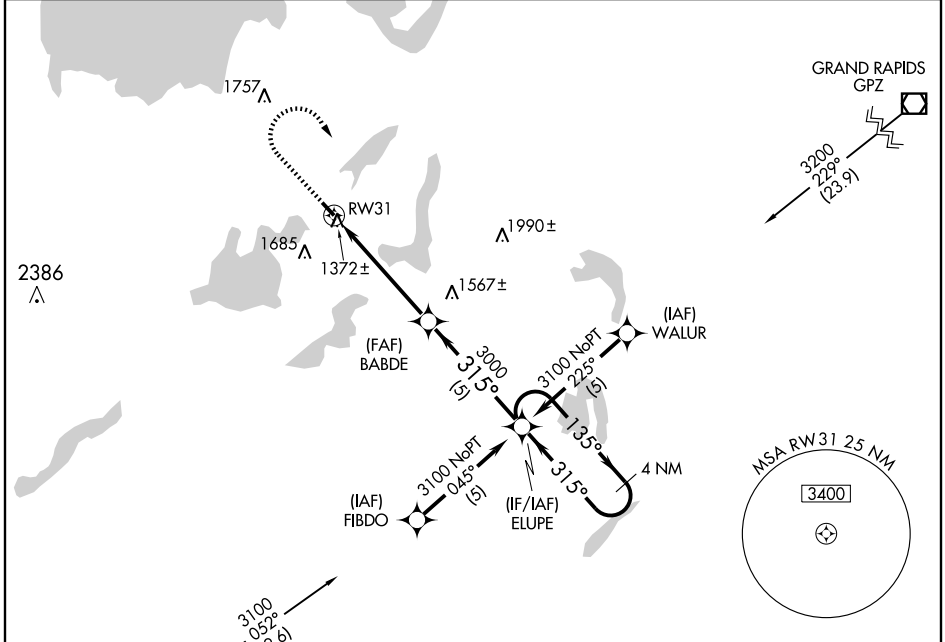
LONGVILLE MUNI (XVG)

APP CRS 315°	Rwy Idg 3800
	TDZE 1332
	Apt Elev 1334

▲NA GPS or RNP-0.3 required. DME/DME RNP-0.3 NA

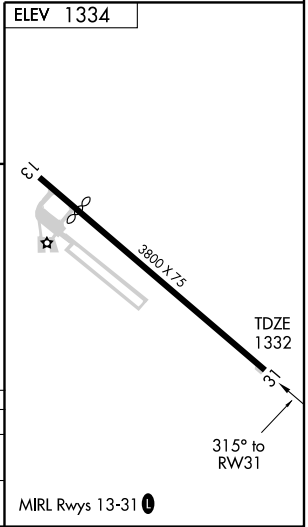
MISSED APPROACH: Climb to 2000 then climbing right turn to 3100 direct ELUPE WP and hold.

AWOS-3 392	MINNEAPOLIS CENTER 118.05 239.0	CTAF 122.9 0
----------------------	---	------------------------



NC-1, 22 OCT 2009 to 19 NOV 2009

NC-1, 22 OCT 2009 to 19 NOV 2009



2000	3100	ELUPE
↑	↷	✦
1.2 NM to RWY 31 RWY 31 3.05° TCH 40 3000 315° 4 NM Holding Pattern ELUPE 135° 315° 3100 1.2 3.8 NM 5 NM		

CATEGORY	A	B	C	D
RNAV MDA	1760-1	428 (500-1)	NA	
CIRCLING	1860-1	526 (600-1)	NA	