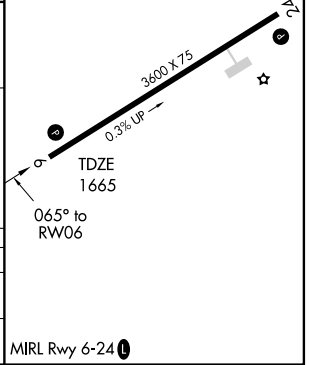
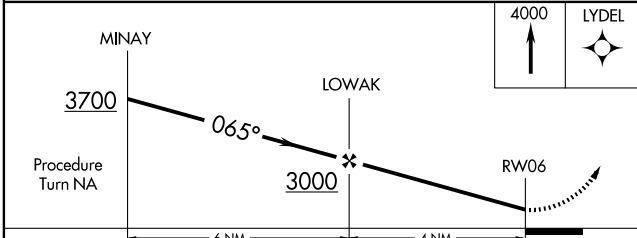
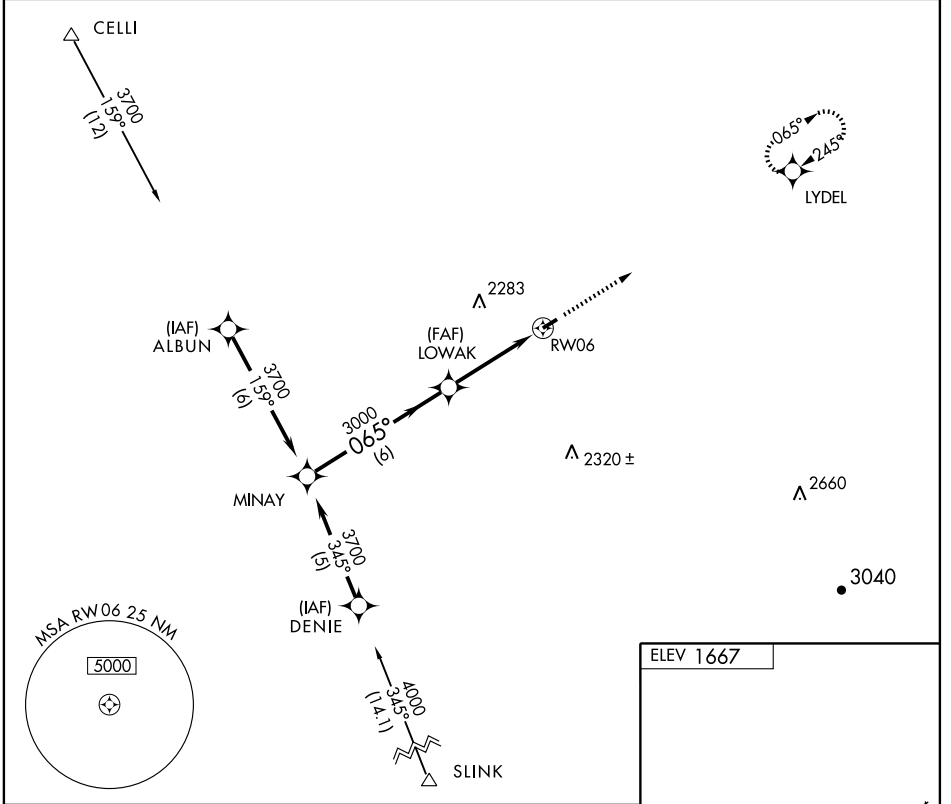


GPS RWY 6
LOGAN COUNTY (6L4)

APP CRS 065°	Rwy Idg 3600
	TDZE 1665
	Apt Elev 1667

<p>▼ Use Charleston altimeter setting.</p> <p>▲ NA</p>	<p>MISSED APPROACH: Climb to 4000 direct LYDEL WP and hold.</p>
--	---

<p>CHARLESTON APP CON 119.2 269.125</p>	<p>CTAF 0 122.9</p>
--	---------------------------------------



	6 NM		4 NM	
CATEGORY	A	B	C	D
S-6	2500-1 835 (900-1)	2500-1¼ 835 (900-1¼)	2500-2½ 835 (900-2½)	NA
CIRCLING	2500-1 833 (900-1)	2500-1¼ 833 (900-1¼)	2500-2½ 833 (900-2½)	NA

NE-4, 22 OCT 2009 to 19 NOV 2009

NE-4, 22 OCT 2009 to 19 NOV 2009