

RNAV (GPS)-A

STERLING / SPRING HILL (70N)

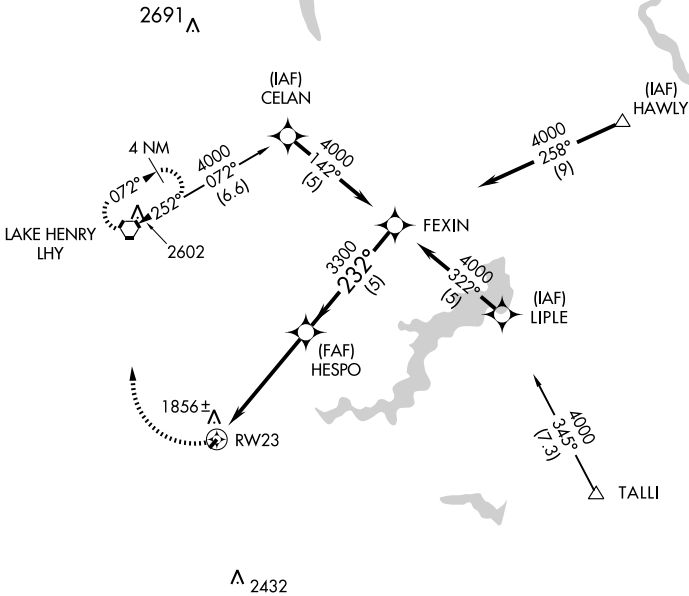
APP CRS 232°	Rwy Idg TDZE Apt Elev	N/A N/A 1729
------------------------	-----------------------------	---

▼ Use Wilkes-Barre/Scranton Inlt altimeter setting.
▲ NA GPS or RNP-0.3 required.
 DME/DME RNP-0.3 NA.

MISSED APPROACH: Climbing right turn to 4000 direct LHY VORTAC and hold.

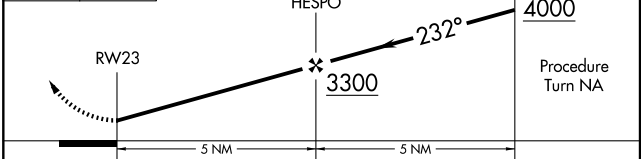
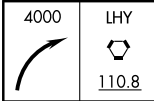
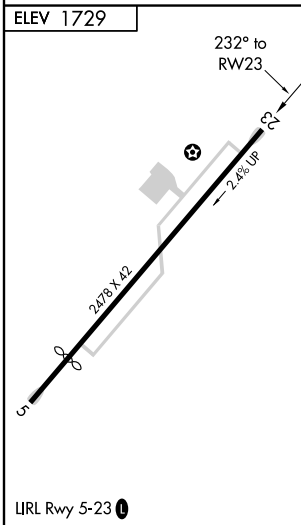
WILKES-BARRE APP CON
126.3 256.7

CTAF **0**
122.9



NE-4, 22 OCT 2009 to 19 NOV 2009

NE-4, 22 OCT 2009 to 19 NOV 2009



CATEGORY	A	B	C	D
CIRCLING	2600-1 871 (900-1)	2620-1¼ 891 (900-1¼)	NA	