

RNAV (GPS) RWY 7

JONESVILLE / LEE COUNTY (ØVG)

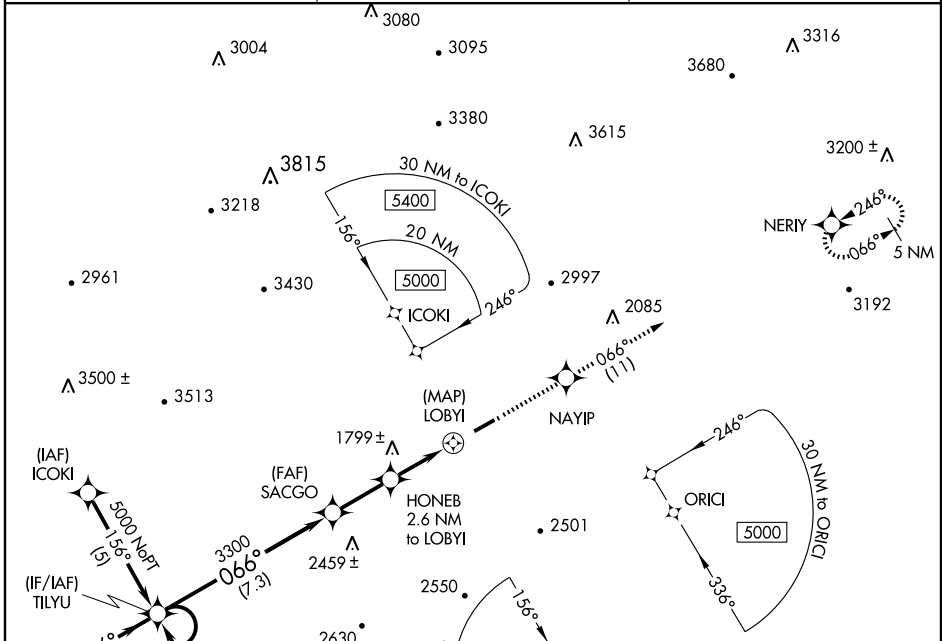
APP CRS	Rwy Idg	5000
066°	TDZE	1403
	Apt Elev	1411

▽ Use Morristown, TN altimeter setting; if not received, use Middlesboro, KY altimeter setting and increase all MDAs 20 feet. DME/DME RNP-0.3 NA.

▲ NA

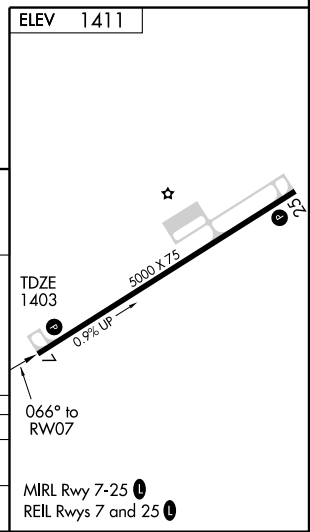
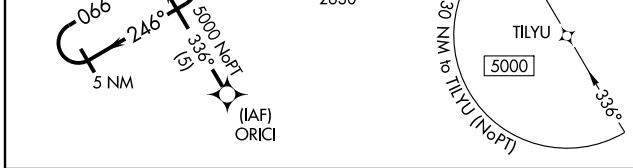
MISSED APPROACH: Climb to 5500 direct NAYIP and via 066° track to NERiy and hold, continue climb-in-hold to 5500.

MORRISTOWN AWOS-3 126.725	ATLANTA APP CON 127.85 371.85	UNICOM 122.9 (CTAF) Ø
-------------------------------------	---	---------------------------------



NE-3, 22 OCT 2009 to 19 NOV 2009

NE-3, 22 OCT 2009 to 19 NOV 2009



5 NM Holding Pattern	TILYU	5500	NAYIP	NERiy
5000 ← 246°	→ 066°	↑	TRK 066°	
	SACGO	HONEB 2.6 NM to LOBYI	LOBYI	RW07
	3300	3.05° TCH 40	2520	
	7.3 NM	2.4 NM	2.6 NM	0.9

CATEGORY	A	B	C	D
LNAV MDA	2140-1	737 (800-1)	2140-2 737 (800-2)	2140-2 1/4 737 (800-2 1/4)
CIRCLING	2200-1 789 (800-1)	2200-1 1/4 789 (800-1 1/4)	2200-2 1/4 789 (800-2 1/4)	2280-2 3/4 869 (900-2 3/4)

MIRL Rwy 7-25 Ø
REIL Rws 7 and 25 Ø