

FREMONT, OHIO

AL-9372 (FAA)

| | | | |
|---|------------------------|-----------------------------|---|
| VOR/DME SKY 109.2 Chan 29 | APP CRS 249° | Rwy Idg TDZE Apt Elev | 5500 662 665 |
|---|------------------------|-----------------------------|---|

VOR/DME RWY 24

FREMONT/ SANDUSKY COUNTY RGNL (S24)



If local altimeter not received use Toledo Express altimeter setting and increase all MDAs 100 feet.

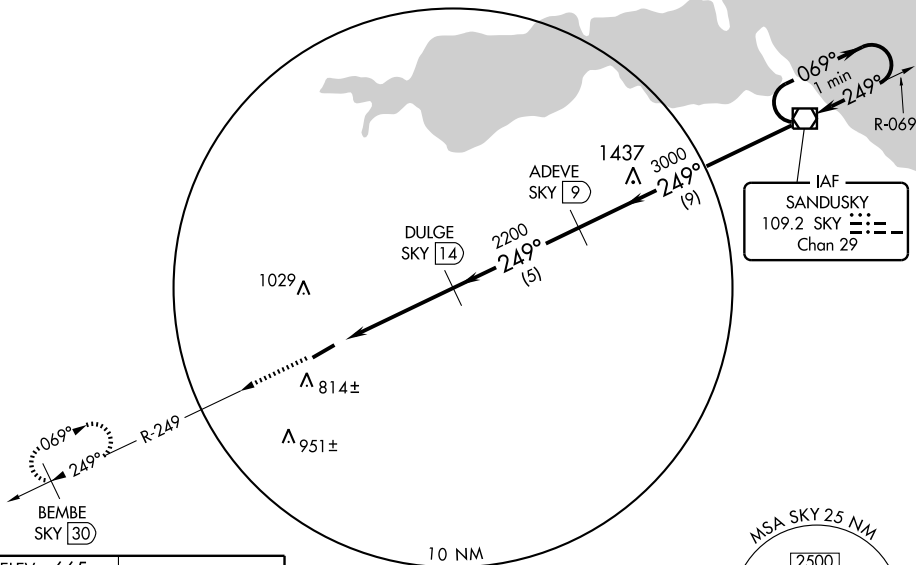
MISSED APPROACH: Climb to 3000 via SKY R-249 to BEMBE/30 DME and hold.

AWOS-3
119.575

MANSFIELD APP CON*
127.35 390.8 (360° - 180°)
TOLEDO APP CON
126.1 307.0 (180°-360°)

UNICOM
123.05 (CTAF)

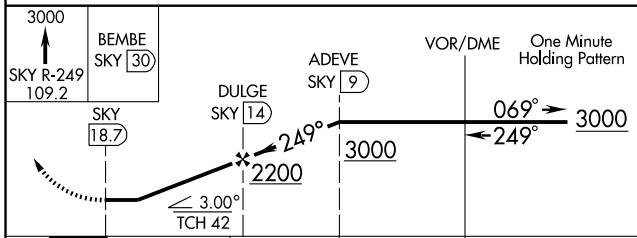
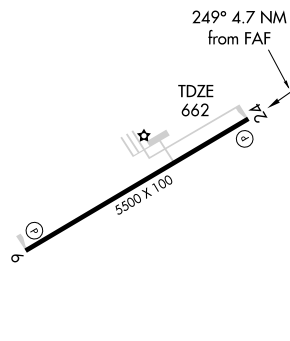
NoPT for arrivals on SKY VOR/DME airway radial 105.



EC-2, 22 OCT 2009 to 19 NOV 2009

EC-2, 22 OCT 2009 to 19 NOV 2009

ELEV 665



| CATEGORY | A | B | C | D |
|----------|--------------------|---|----------------------|----------------------|
| S-24 | 1260-1 598 (600-1) | | 1260-1½ 598 (600-1½) | 1260-1¾ 598 (600-1¾) |
| CIRCLING | 1260-1 595 (600-1) | | 1260-1½ 595 (600-1½) | 1480-2¾ 815 (900-2¾) |

REIL Rwy 6 and 24
MIRL Rwy 6-24

FREMONT, OHIO
Orig-A 09183

41°18'N - 83°02'W

VOR/DME RWY 24