

FREMONT, OHIO

AL-9372 (FAA)

# GPS RWY 6

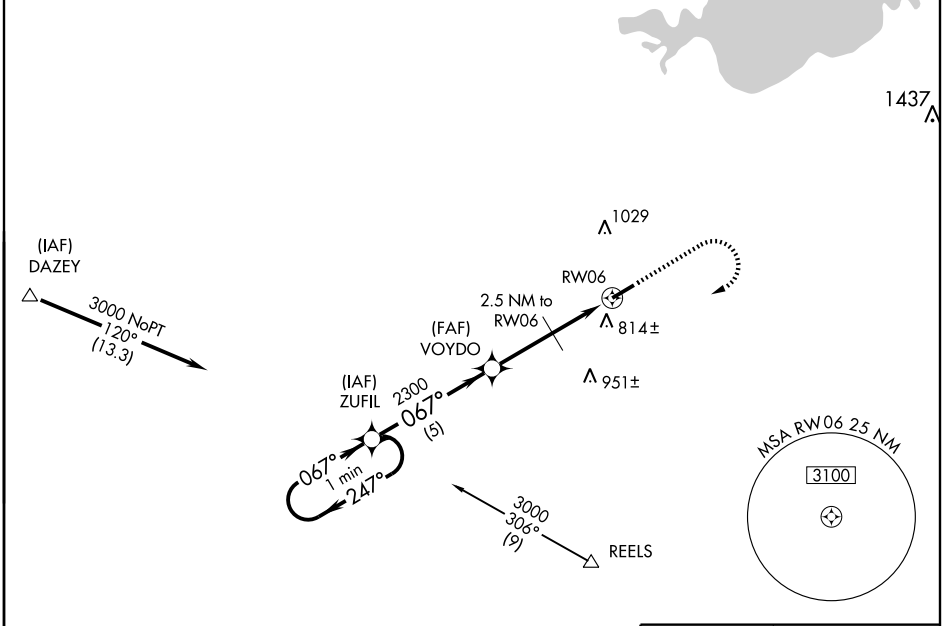
FREMONT/ SANDUSKY COUNTY RGNL (S24)

APP CRS	Rwy Idg	<b>5500</b>
<b>067°</b>	TDZE	<b>665</b>
	Apt Elev	<b>665</b>

**▲ NA** When local altimeter setting not received, use Toledo Express altimeter setting and increase all MDAs 100 feet.

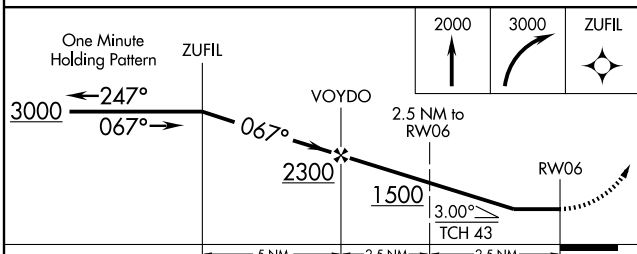
**MISSED APPROACH:** Climb to 2000, then climbing right turn to 3000 direct ZUFIL WP and hold.

AWOS-3 <b>119.575</b>	MANSFIELD APP CON <b>127.35 390.8 (360° - 180°)</b> TOLEDO APP CON <b>126.1 307.0 (180°-360°)</b>	UNICOM <b>123.05 (CTAF) 0</b>
--------------------------	--	----------------------------------

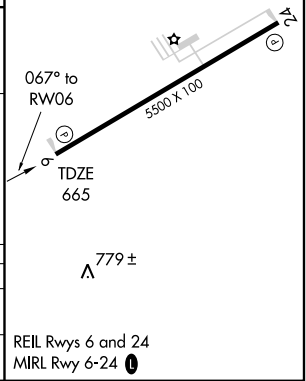


EC-2, 22 OCT 2009 to 19 NOV 2009

EC-2, 22 OCT 2009 to 19 NOV 2009



CATEGORY	A	B	C	D
S-6	1160-1 495 (500-1)		1160-1 ¼ 495 (500-1 ¼)	1160-1 ½ 495 (500-1 ½)
CIRCLING	1280-1 615 (700-1)		1280-1 ¾ 615 (700-1 ¾)	1480-2 ¾ 815 (900-2 ¾)



FREMONT, OHIO  
Orig-B 09183

FREMONT/ SANDUSKY COUNTY RGNL (S24)

41°18'N - 83°02'W

# GPS RWY 6