

# RNAV (GPS) RWY 14

LAKE PLACID (LKP)

APP CRS	Rwy ldg	<b>4200</b>
<b>125°</b>	TDZE	<b>1746</b>
	Apt Elev	<b>1747</b>

**▼** GPS or RNP-0.3 required. DME/DME RNP-0.3 NA.  
**▲** NA Use Saranac Lake altimeter setting.  
 Procedure NA at night.

MISSED APPROACH: Climbing right turn to 5000 direct PUGRE WP and hold.

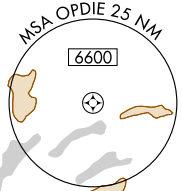
SARANAC LAKE  
ASOS  
**124.175**

BOSTON CENTER  
**120.35 342.25**

UNICOM  
**122.8 (CTAF)**

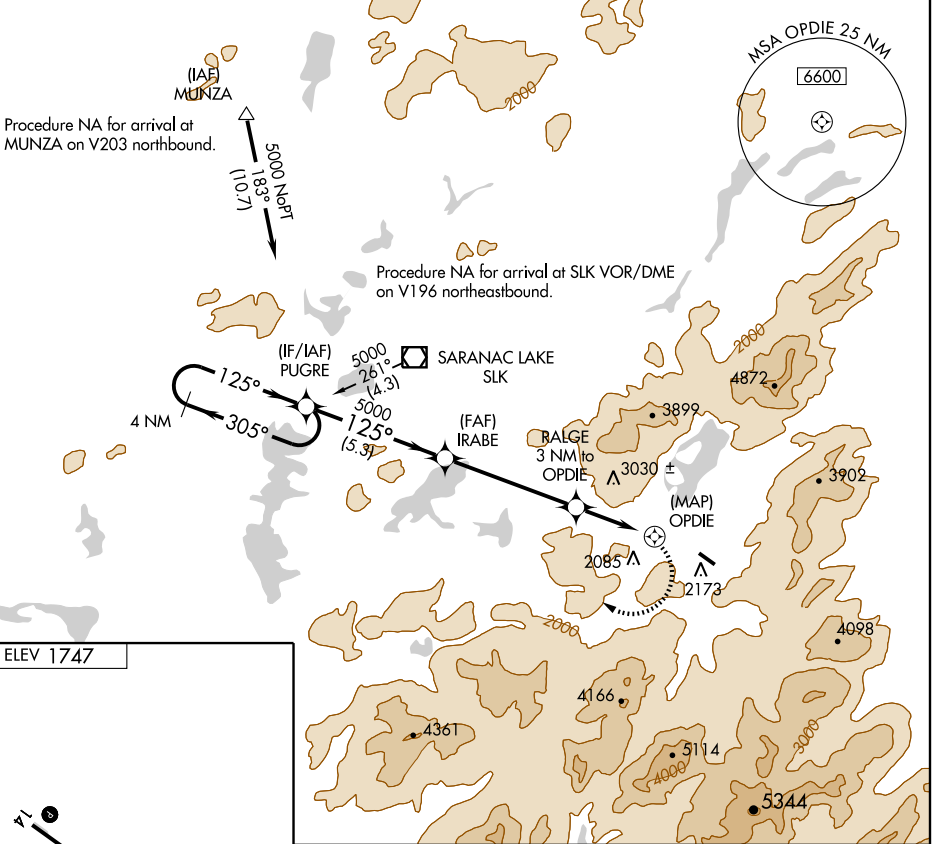
Procedure NA for arrival at MUNZA on V203 northbound.

Procedure NA for arrival at SLK VOR/DME on V196 northeastbound.

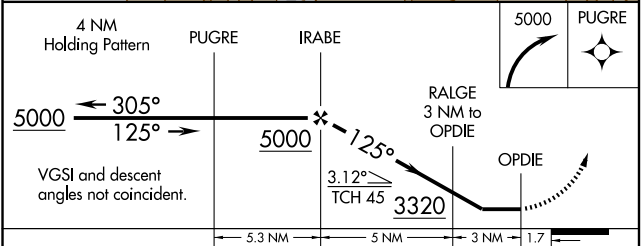
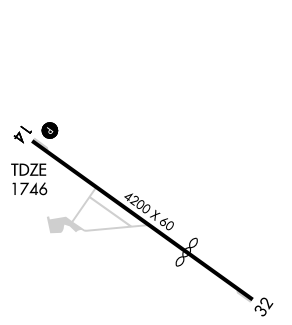


NE-2, 22 OCT 2009 to 19 NOV 2009

NE-2, 22 OCT 2009 to 19 NOV 2009



ELEV 1747



CATEGORY	A	B	C	D
LNAV MDA	3140-2	1394 (1400-2)		NA
CIRCLING	3140-2	1393 (1400-2)		NA