

RNAV (GPS) RWY 31

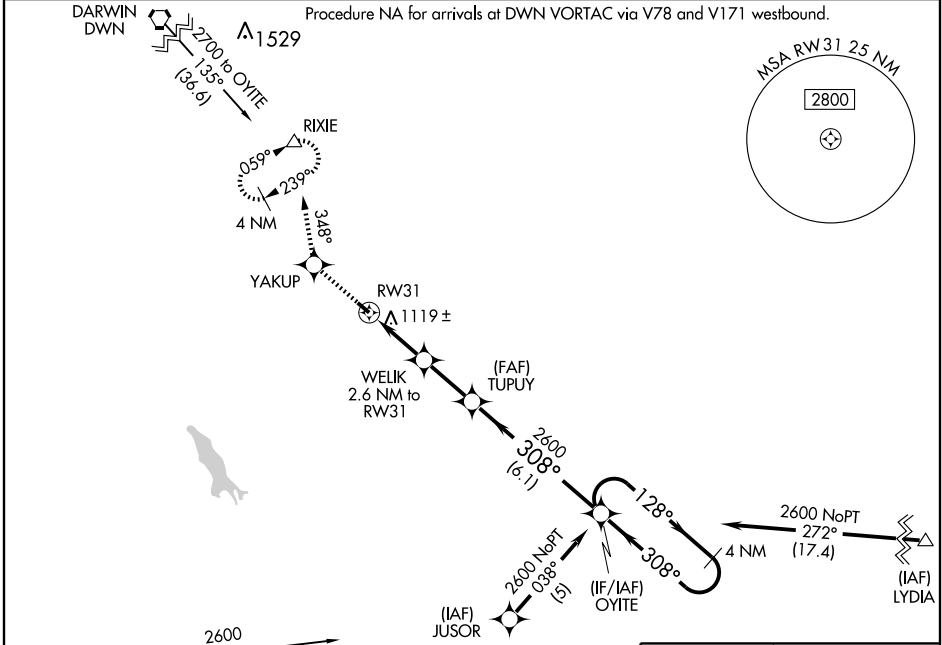
GLENCOE MUNI (GYL)

APP CRS 308°	Rwy Idg 3300
	TDZE 991
	Apt Elev 992

▼ DME DME/RNP-0.3 NA. Visibility reduction by helicopters NA.
▲ When local altimeter setting not received, use Hutchinson altimeter setting and increase all MDA 60 feet.

MISSED APPROACH: Climb to 3000 direct YAKUP and via 348° track to RIXIE and hold, continue climb-in-hold to 3000.

AWOS-3 407	MINNEAPOLIS APP CON 134.7 284.7	UNICOM 122.8 (CTAF) 0
----------------------	---	---------------------------------



NC-1, 22 OCT 2009 to 19 NOV 2009

NC-1, 22 OCT 2009 to 19 NOV 2009

ELEV 992				
3000	YAKUP	348° track	RIXIE	TUPUY
↑	✧		△	
<p>WELIK 2.6 NM to RW31 $\leq 3.04^\circ$ TCH 40</p> <p>308° 128° 2600</p> <p>1860 2600</p> <p>2.6 NM 2.3 NM 6.1 NM</p> <p>4 NM Holding Pattern</p> <p>TDZE 991</p> <p>308° to RW31</p>				
CATEGORY	A	B	C	D
LNAV MDA	1380-1	389 (400-1)	NA	
CIRCLING	1440-1 448 (500-1)	1460-1 468 (500-1)	NA	
MIRL Rwy 13-31 0				