

BLACKFOOT, IDAHO

AL-9351 (FAA)

VOR/DME-C

BLACKFOOT/MCCARLEY FIELD (U02)

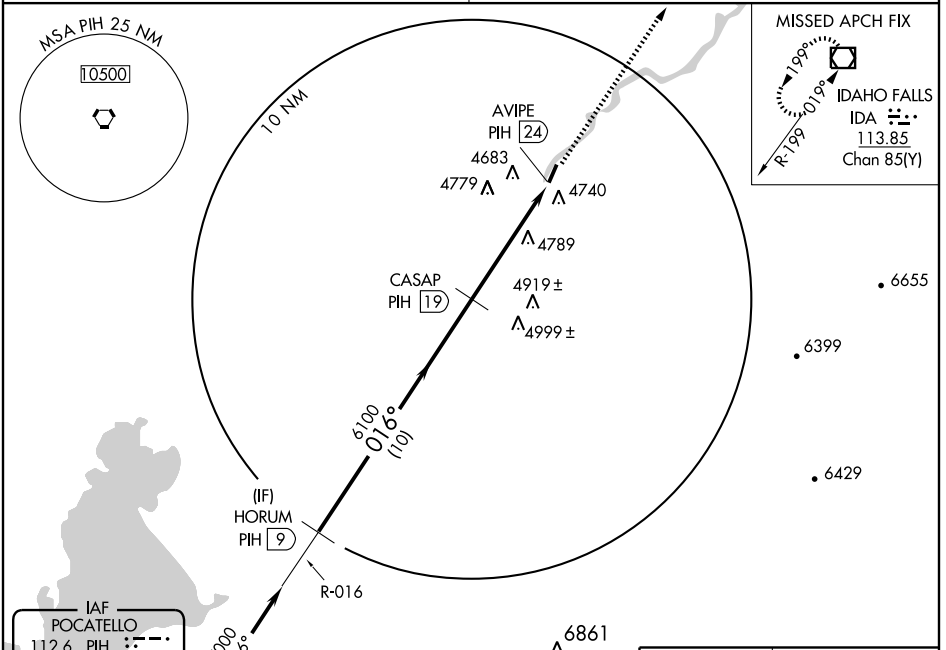
VORTAC PIH 112.6 Chan 73	APP CRS 016°	Rwy Idg TDZE Apt Elev	N/A N/A 4488
--	------------------------	-----------------------------	---

▲ NA Use Pocatello Rgnl altimeter setting, when not received use Idaho Falls Rgnl altimeter setting.

MISSED APPROACH: Climb to 7000 direct IDA VOR/DME and hold.

SALT LAKE CITY CENTER **128.35 239.25**

UNICOM **122.8** (CTAF)



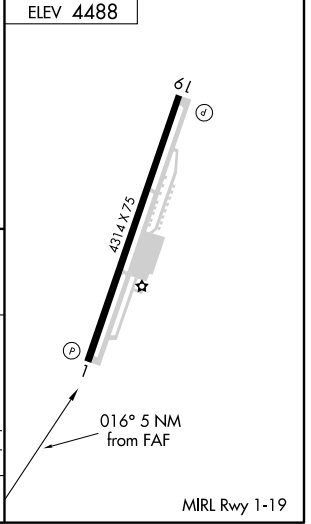
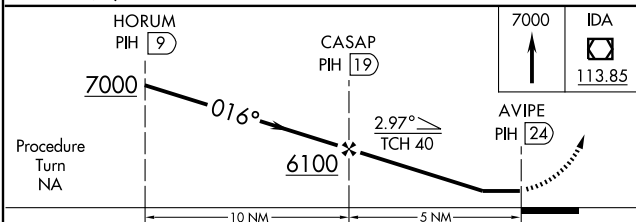
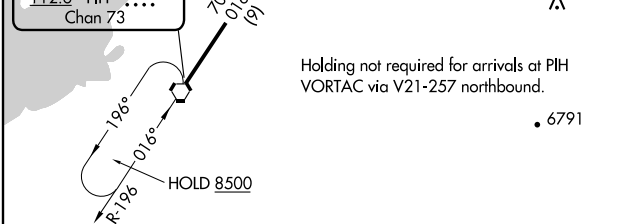
NW-1, 22 OCT 2009 to 19 NOV 2009

NW-1, 22 OCT 2009 to 19 NOV 2009

IAF
POCATELLO
112.6 PIH
Chan **73**

ELEV **4488**

Holding not required for arrivals at PIH VORTAC via V21-257 northbound.



CATEGORY	A	B	C	D
CIRCLING	5460-1¼ 972 (1000-1¼)	5460-1½ 972 (1000-1½)	5460-3	972 (1000-3)

BLACKFOOT, IDAHO
Orig 09239

43° 13' N - 112° 21' W

BLACKFOOT/MCCARLEY FIELD (U02)

VOR/DME-C

MIRL Rwy 1-19