

BLACKFOOT, IDAHO

AL-9351 (FAA)

RNAV (GPS)-B

BLACKFOOT/MCCARLEY FIELD (U02)

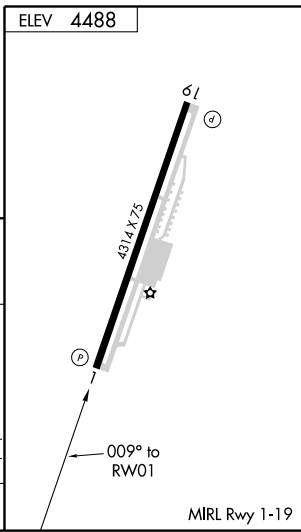
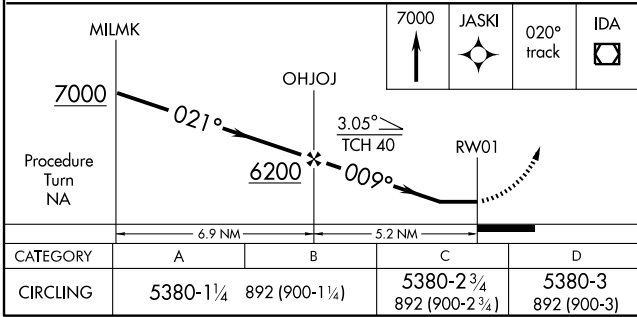
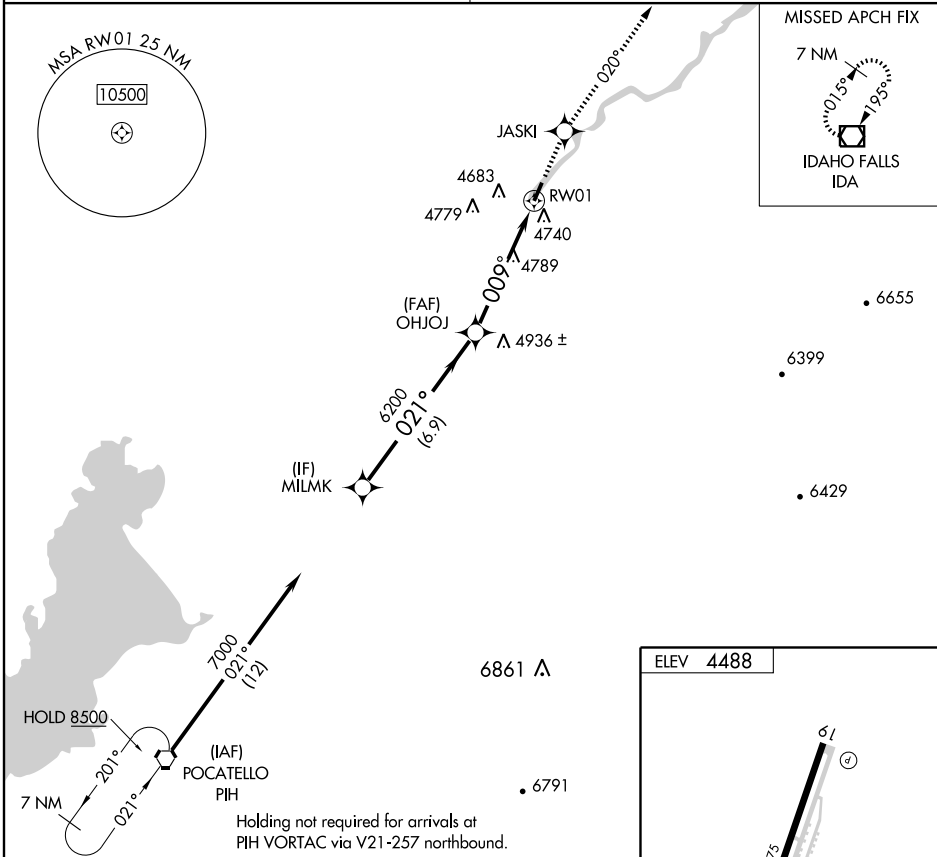
APP CRS	Rwy Idg	N/A
009°	TDZE	N/A
	Apt Elev	4488

▽ Use Pocatello Rgnl altimeter setting, when not received
△ NA use Idaho Falls Rgnl altimeter setting.
 DME/DME RNP-0.3 NA.

MISSED APPROACH: Climb to 7000 direct JASKI and via 020° track to IDA VOR/DME and hold.

SALT LAKE CITY CENTER
128.35 239.25

UNICOM
122.8 (CTAF)



CATEGORY	A	B	C	D
CIRCLING	5380-1¼	892 (900-1¼)	5380-2¾ 892 (900-2¾)	5380-3 892 (900-3)

BLACKFOOT, IDAHO
 Orig 09239

43° 13' N - 112° 21' W

BLACKFOOT/ MCCARLEY FIELD (U02)
RNAV (GPS)-B

NW-1, 22 OCT 2009 to 19 NOV 2009

NW-1, 22 OCT 2009 to 19 NOV 2009