

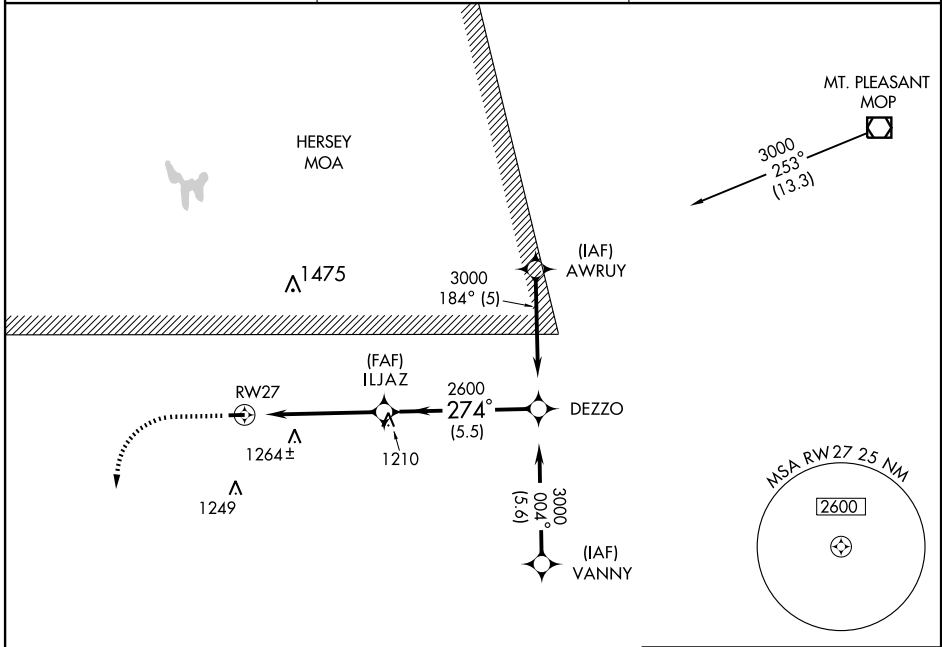
GPS RWY 27

LAKEVIEW AIRPORT-GRIFFITH FIELD (13C)

APP CRS 274°	Rwy Idg 3500
	TDZE 969
	Apt Elev 969

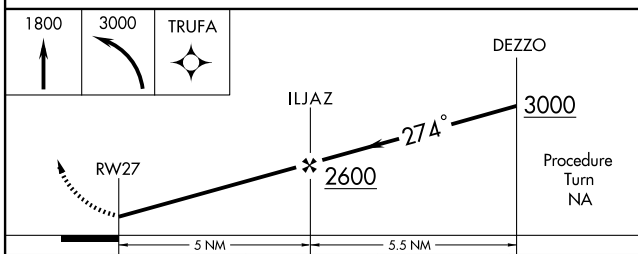
<p>▽ NA Use Roben-Hood altimeter setting.</p>	<p>MISSED APPROACH: Climb to 1800, then climbing left turn to 3000 direct TRUFA WP and hold.</p>
--	--

<p>ROBEN-HOOD AWOS-3 121.125</p>	<p>GRAND RAPIDS APP CON * 124.6 257.6</p>	<p>UNICOM 122.8 (CTAF) ①</p>
---	--	--



EC-1, 22 OCT 2009 to 19 NOV 2009

EC-1, 22 OCT 2009 to 19 NOV 2009



CATEGORY	A	B	C	D
S-27	1460-1	491 (500-1)		NA
CIRCLING	1460-1 491 (500-1)	1580-1 611 (700-1)		NA

MIRL Rwy 9-27 **①**
REIL Rwy 9 and 27 **①**