

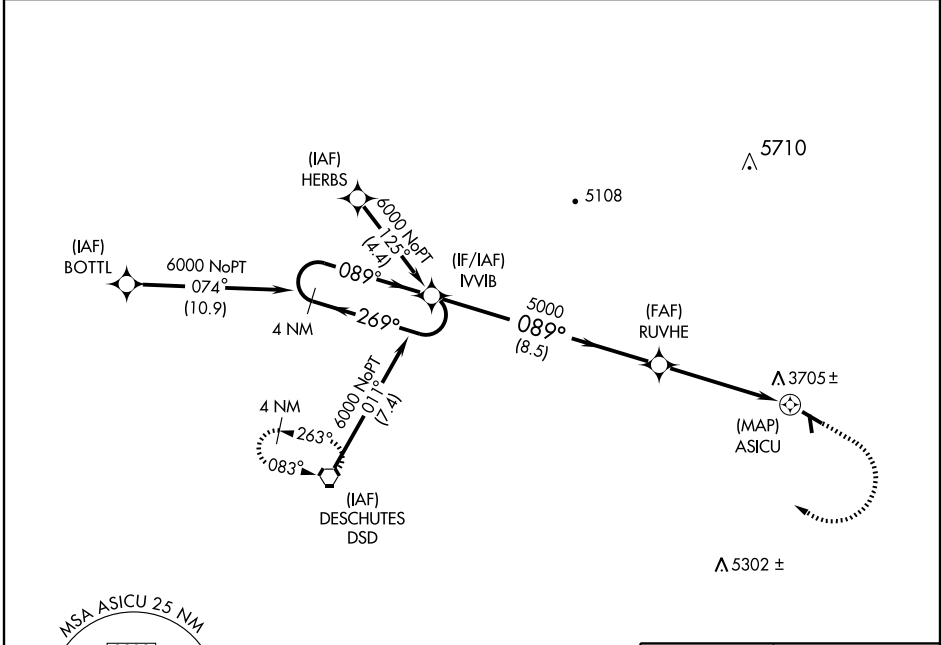
# RNAV (GPS) RWY 10

PRINEVILLE (S39)

APP CRS <b>089°</b>	Rwy Idg <b>5000</b>
	TDZE <b>3250</b>
	Apt Elev <b>3250</b>

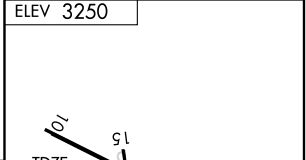
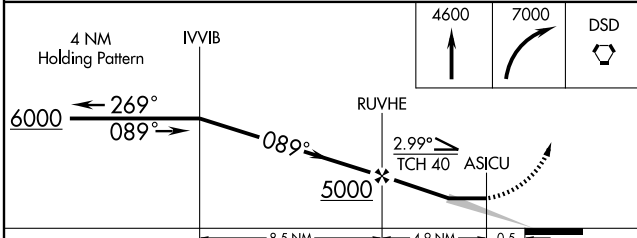
**GPS or RNP-0.3 required. DME/DME RNP-0.3 NA.**  
**NA** Use Roberts Field altimeter setting.  
**MISSED APPROACH:** Climb to 4600 then climbing right turn to 7000 direct DSD VORTAC and hold.

SEATTLE CENTER <b>128.15 257.75</b>	UNICOM <b>122.8 (CTAF)</b>
--	-------------------------------



NW-1, 22 OCT 2009 to 19 NOV 2009

NW-1, 22 OCT 2009 to 19 NOV 2009



CATEGORY	A	B	C	D
LNVA MDA	4020-1 770 (800-1)	4020-1½ 770 (800-1½)	4020-2¼ 770 (800-2¼)	4020-2½ 770 (800-2½)
CIRCLING	4060-1 810 (900-1)	4100-1½ 850 (900-1½)	4100-2½ 850 (900-2½)	4100-2¾ 850 (900-2¾)

