

# RNAV (GPS) RWY 6

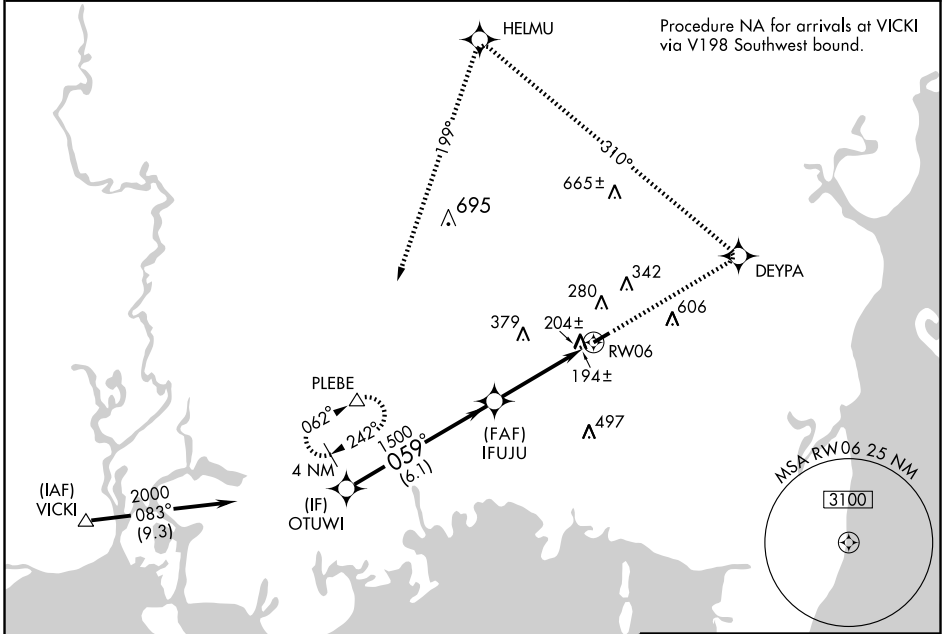
ST. ELMO (2R5)

WAAS CH <b>69507</b> <b>W06A</b>	APP CRS <b>059°</b>	Rwy Idg <b>3998</b> TDZE <b>132</b> Apt Elev <b>132</b>
--	------------------------	---

**NA** DME/DME RNP -0.3 NA. Visibility reduction by helicopters NA. Use Mobile Rgnl altimeter setting; when not received use Pascagoula altimeter setting and increase DA to 483 feet and all MDA 20 feet.

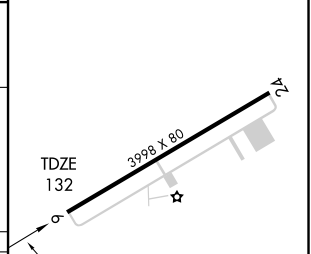
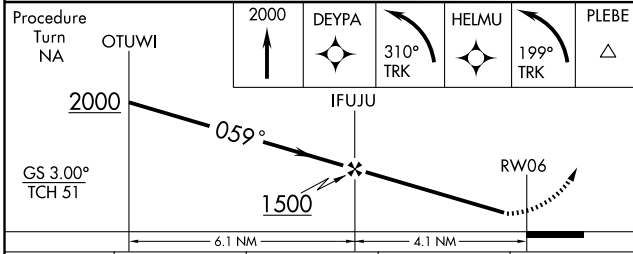
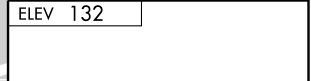
**MISSED APPROACH:** Climb to 2000 direct DEYPA and left turn via 310° track to HELMU and left turn via 199° track to PLEBE and hold.

MOBILE APP CON <b>121.0 307.1</b>	CTAF <b>122.9</b>	<b>122.75</b> <b>0</b>
--------------------------------------	----------------------	------------------------



SE-4, 22 OCT 2009 to 19 NOV 2009

SE-4, 22 OCT 2009 to 19 NOV 2009



CATEGORY	A	B	C	D
LPV DA	475-1¼ 343 (400-1¼)			NA
LNAV MDA	540-1	408 (500-1)	540-1¼ 408 (500-¼)	NA
CIRCLING	620-1	488 (500-1)	700-1½ 568 (600-1½)	NA

MIRL Rwy 6-24 **0**