

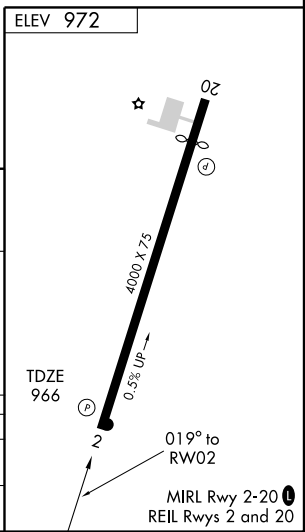
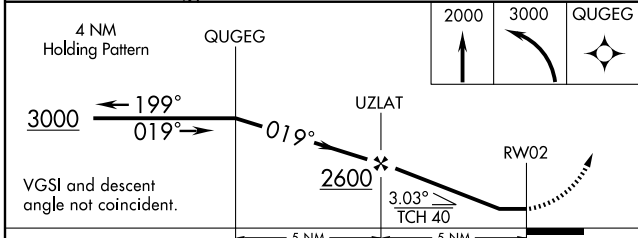
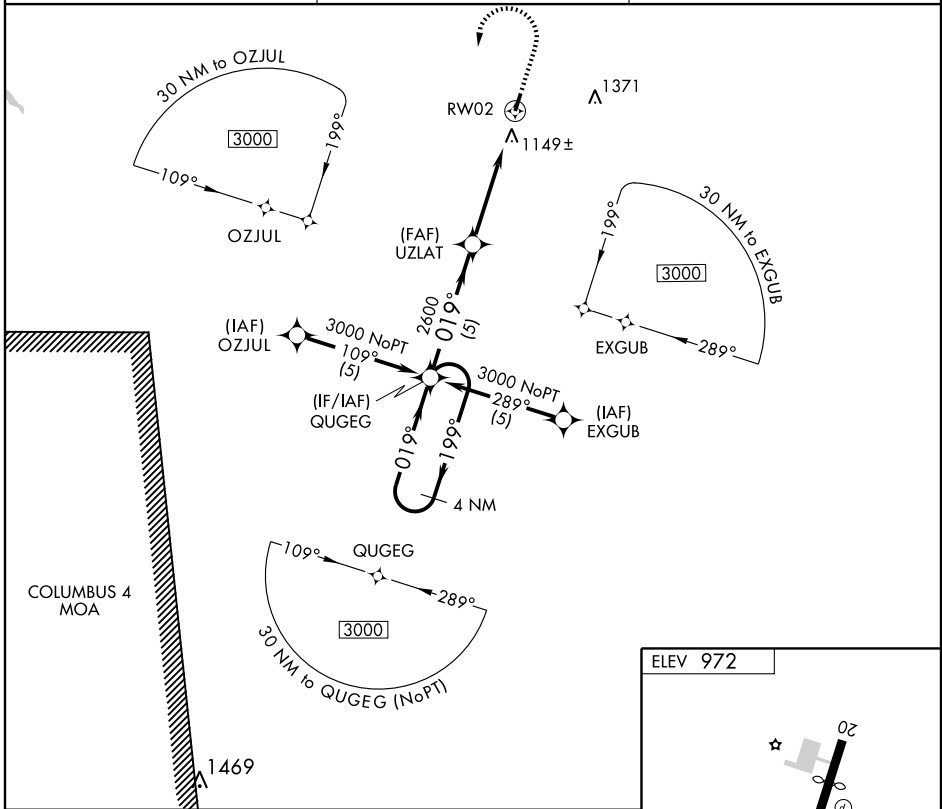
RNAV (GPS) RWY 2

HOHENWALD/ JOHN A. BAKER FIELD (0M3)

APP CRS	Rwy Idg	4000
019°	TDZE	966
	Apt Elev	972

▲ NA GPS or RNP-0.3 Required. DME/DME RNP-0.3 NA. Use Lawrenceburg-Lawrence County altimeter setting. MISSED APPROACH: Climb to 2000 then climbing left turn to 3000 direct QUGEG WP and hold.

LAWRENCEBURG AWOS-3 120.175	MEMPHIS CENTER 125.85 379.25	UNICOM 122.8 (CTAF) 0
---------------------------------------	--	---------------------------------



CATEGORY	A	B	C	D
LNNAV	1480-1 514 (600-1)		1480-1½ 514 (600-1½)	NA
CIRCLING	1520-1 548 (600-1)		1520-1½ 548 (600-1½)	NA

SE-1, 22 OCT 2009 to 19 NOV 2009

SE-1, 22 OCT 2009 to 19 NOV 2009