

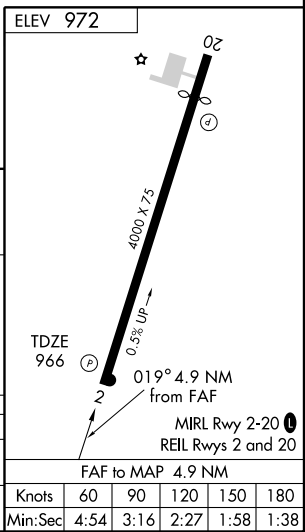
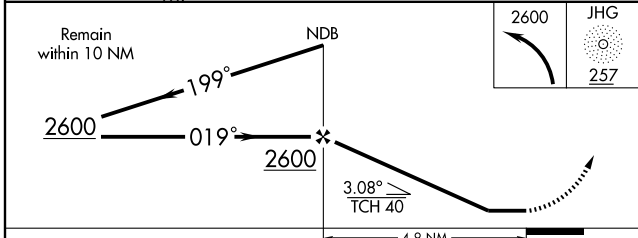
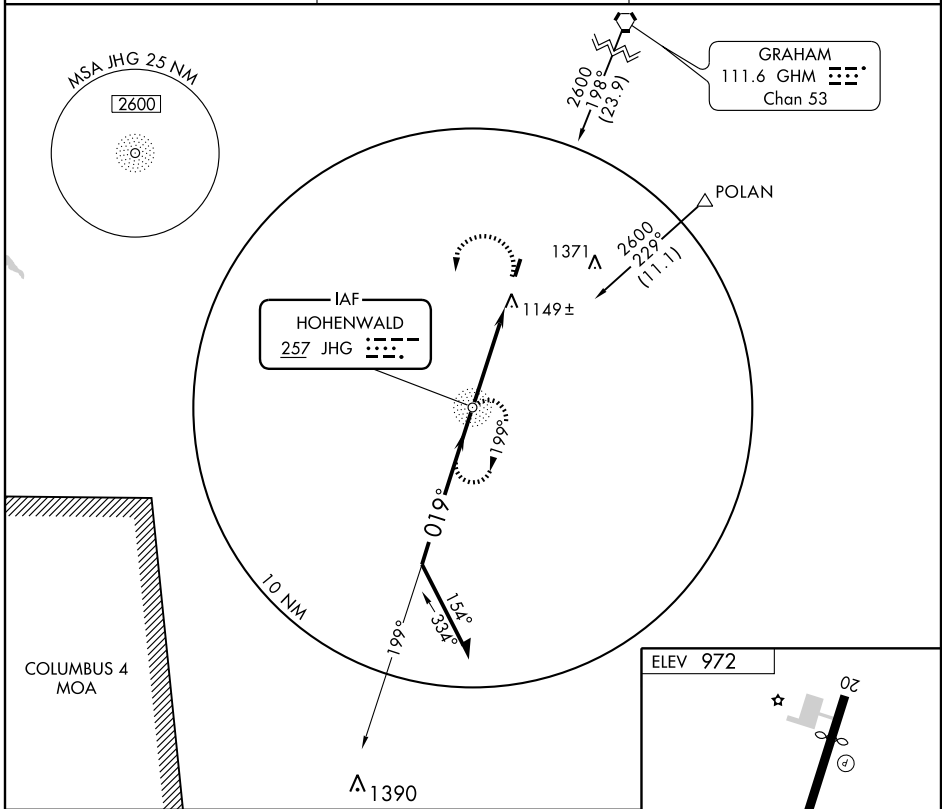
# NDB RWY 2

HOHENWALD/JOHN A BAKER FIELD (0M3)

NDB JHG <b>257</b>	APP CRS <b>019°</b>	Rwy Idg TDZE Apt Elev	<b>4000</b> <b>966</b> <b>972</b>
-----------------------	------------------------	-----------------------------	---

**NA** Use Lawrenceburg-Lawrence County altimeter setting. MISSED APPROACH: Climbing left turn to 2600 direct JHG NDB and hold.

LAWRENCEBURG AWOS-3 <b>120.175</b>	MEMPHIS CENTER <b>125.85 379.25</b>	UNICOM <b>122.8 (CTAF)</b>
---------------------------------------	--	-------------------------------



CATEGORY	A	B	C	D
S-2	1520-1	554 (600-1)	1520-1½ 554 (600-1½)	NA
CIRCLING	1520-1	548 (600-1)	1520-1½ 548 (600-1½)	NA

FAF to MAP 4.9 NM					
Knots	60	90	120	150	180
Min:Sec	4:54	3:16	2:27	1:58	1:38

# NDB RWY 2

SE-1, 22 OCT 2009 to 19 NOV 2009

SE-1, 22 OCT 2009 to 19 NOV 2009