

STEBENVILLE, OHIO

AL-9331 (FAA)

GPS RWY 32

STEBENVILLE/JEFFERSON COUNTY AIRPARK (2G2)

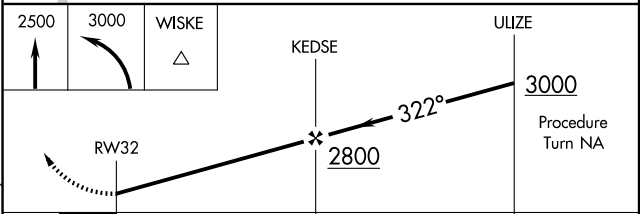
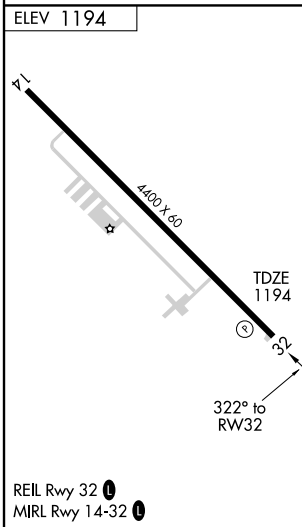
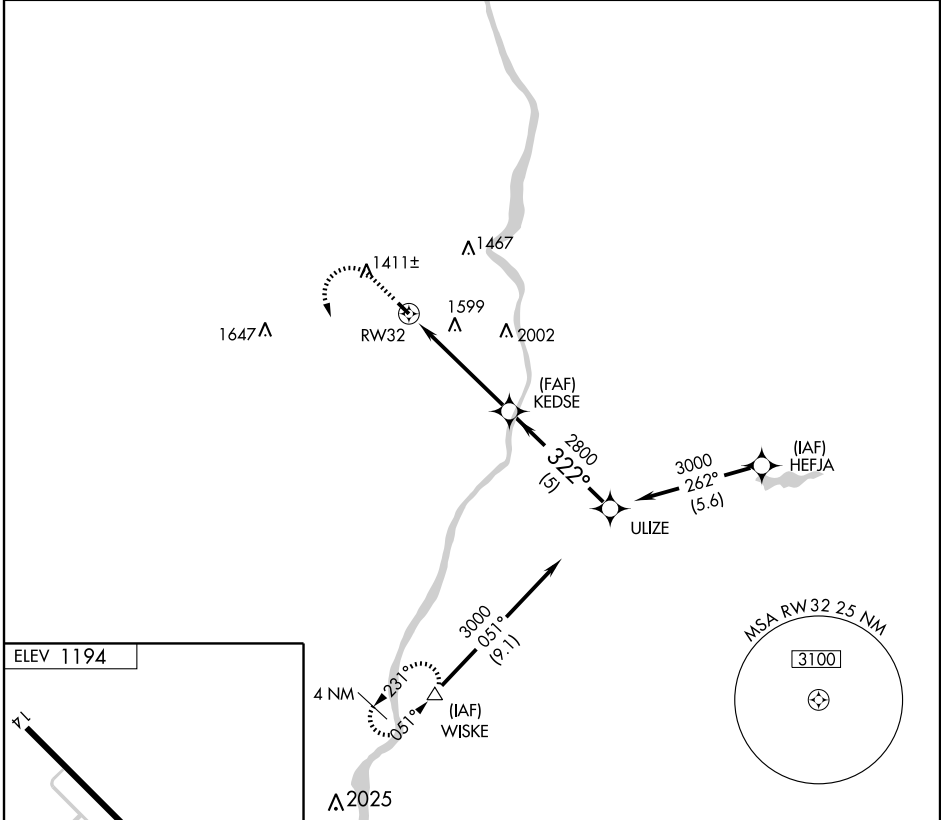
APP CRS 322°	Rwy Idg 4400
	TDZE 1194
	Apt Elev 1194

<p>▼ Use Wheeling, WV altimeter setting, when not received procedure NA.</p> <p>▲ NA</p>	<p>MISSED APPROACH: Climb to 2500, then climbing left turn to 3000 direct WISKE WP and hold.</p>
--	--

<p>PITTSBURGH APP CON 124.750 338.2</p>	<p>UNICOM 122.8 (CTAF) 0</p>
--	---

EC-2, 22 OCT 2009 to 19 NOV 2009

EC-2, 22 OCT 2009 to 19 NOV 2009



CATEGORY	A	B	C	D
S-32	1940-1 746 (800-1)	1940-1¼ 746 (800-1¼)		NA
CIRCLING	1940-1 746 (800-1)	1940-1¼ 746 (800-1¼)		NA

STEBENVILLE, OHIO
Orig 08269

STEBENVILLE/JEFFERSON COUNTY AIRPARK (2G2)
40°22'N - 80°42'W

GPS RWY 32