

STEUBENVILLE, OHIO

AL-9331 (FAA)

GPS RWY 14

STEUBENVILLE/JEFFERSON COUNTY AIRPARK (2G2)

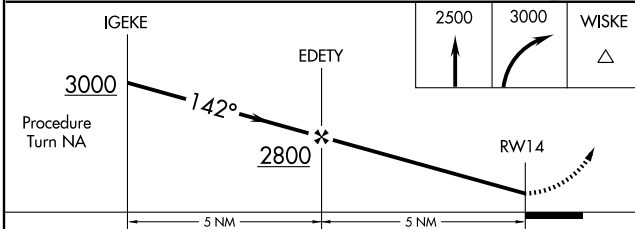
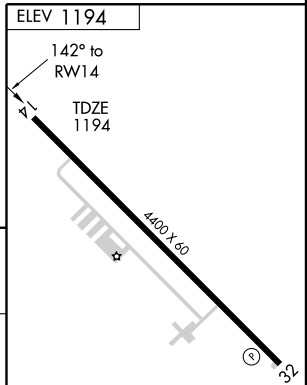
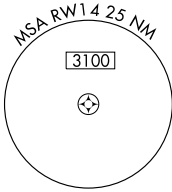
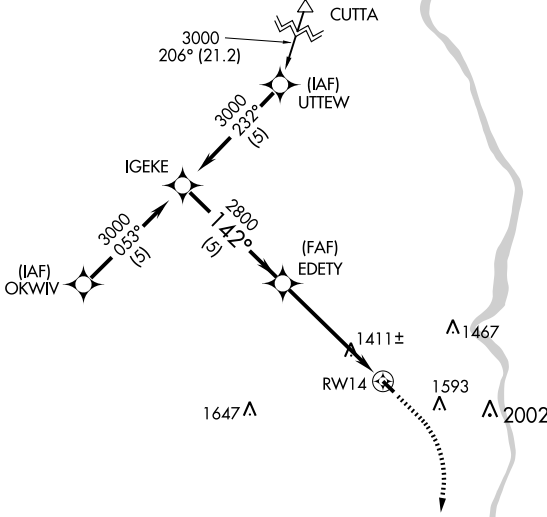
APP CRS	Rwy Idg	4400
142°	TDZE	1194
	Apt Elev	1194

▽ Use Wheeling, WV altimeter setting, when not received procedure NA.
▲ NA

MISSED APPROACH: Climb to 2500, then climbing right turn to 3000 direct WISKE WP and hold.

PITTSBURGH APP CON
124.750 338.2

UNICOM
122.8 (CTAF)



CATEGORY	A	B	C	D
S-14	1740-1	546 (600-1)		NA
CIRCLING	1780-1	586 (600-1)		NA

REIL Rwy 32 **①**
MIRL Rwy 14-32 **①**

STEUBENVILLE, OHIO
Orig 08269

STEUBENVILLE/JEFFERSON COUNTY AIRPARK (2G2)
40°22'N - 80°42'W

GPS RWY 14

EC-2, 22 OCT 2009 to 19 NOV 2009

EC-2, 22 OCT 2009 to 19 NOV 2009