

# PUEBLO ONE DEPARTURE (RNAV) (OBSTACLE)

DENVER CENTER  
119.85 363.15  
UNICOM 122.8 (CTAF)

### TAKE-OFF MINIMUMS

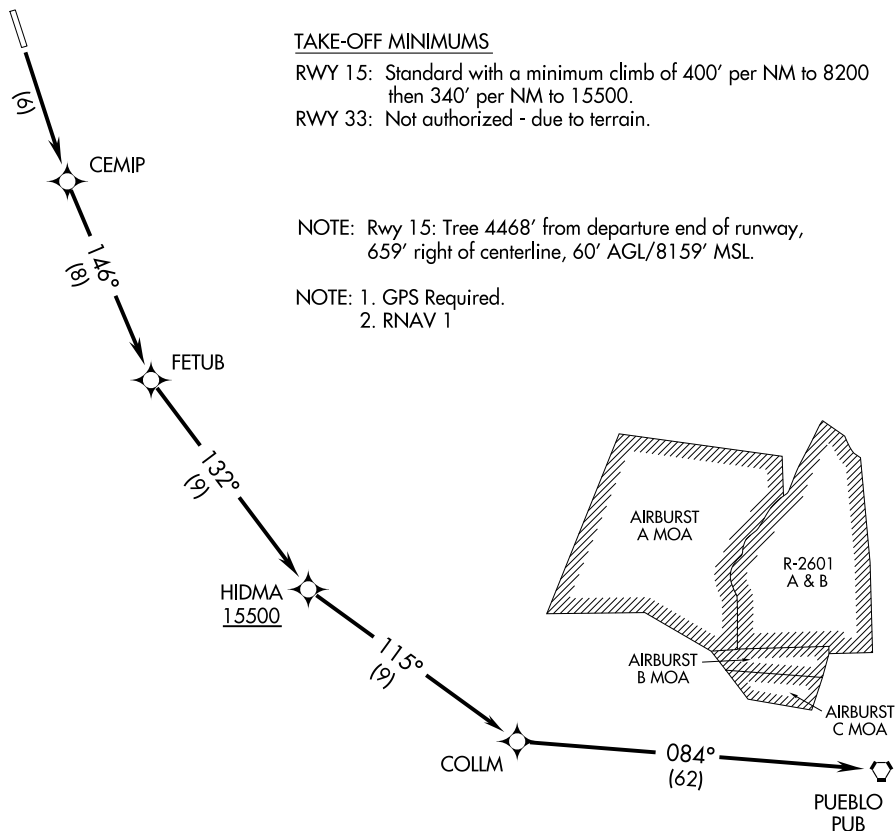
RWY 15: Standard with a minimum climb of 400' per NM to 8200 then 340' per NM to 15500.

RWY 33: Not authorized - due to terrain.

NOTE: Rwy 15: Tree 4468' from departure end of runway, 659' right of centerline, 60' AGL/8159' MSL.

NOTE: 1. GPS Required.

2. RNAV 1



NOTE: Chart not to scale.



### DEPARTURE ROUTE DESCRIPTION

TAKE-OFF RUNWAY 15: Climb direct CEMIP WP, then via 146° track to FETUB WP then via 132° track to cross HIDMA WP at or above 15500', then via depicted route to PUB VORTAC.

TAKE-OFF RUNWAY 33: Not authorized.

SW-1, 22 OCT 2009 to 19 NOV 2009

SW-1, 22 OCT 2009 to 19 NOV 2009