

# RNAV (GPS) RWY 8

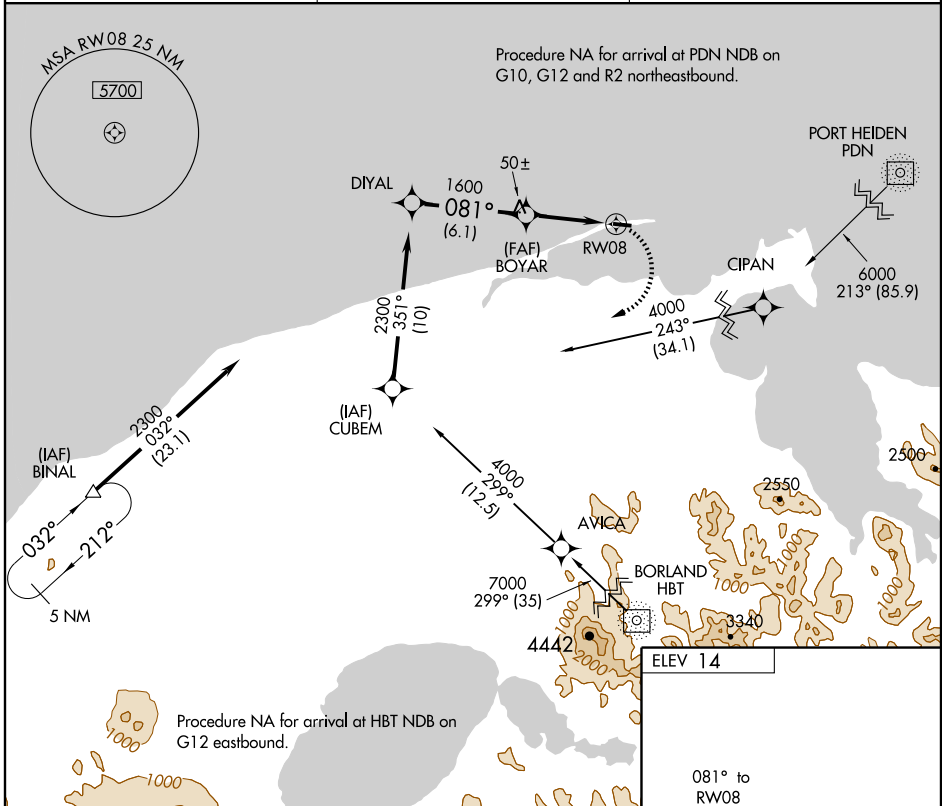
NELSON LAGOON (OUL) (PAOU)

APP CRS	Rwy Idg	<b>4000</b>
<b>081°</b>	TDZE	<b>14</b>
	Apt Elev	<b>14</b>

**NA** If local altimeter setting not received, use Cold Bay altimeter setting. DME/DME RNP-0.3 NA.

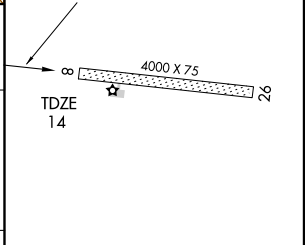
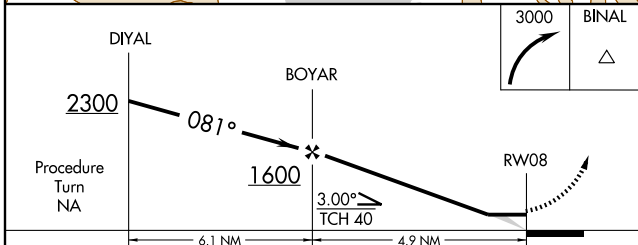
**MISSED APPROACH:** Climbing right turn to 3000 direct BINAL WP and hold.

ASOS <b>119.025</b>	ANCHORAGE CENTER <b>118.5 278.3</b>	CTAF <b>122.9</b> <b>0</b>
------------------------	--	-------------------------------



AK, 22 OCT 2009 to 17 DEC 2009

AK, 22 OCT 2009 to 17 DEC 2009



CATEGORY	A	B	C	D
RNAV MDA	1040-1¼ 1026 (1100-1¼)	1040-1½ 1026 (1100-1½)		NA
CIRCLING	1080-1¼ 1066 (1100-1¼)	1080-1½ 1066 (1100-1½)		NA

MIRL Rwy 8-26 **0**