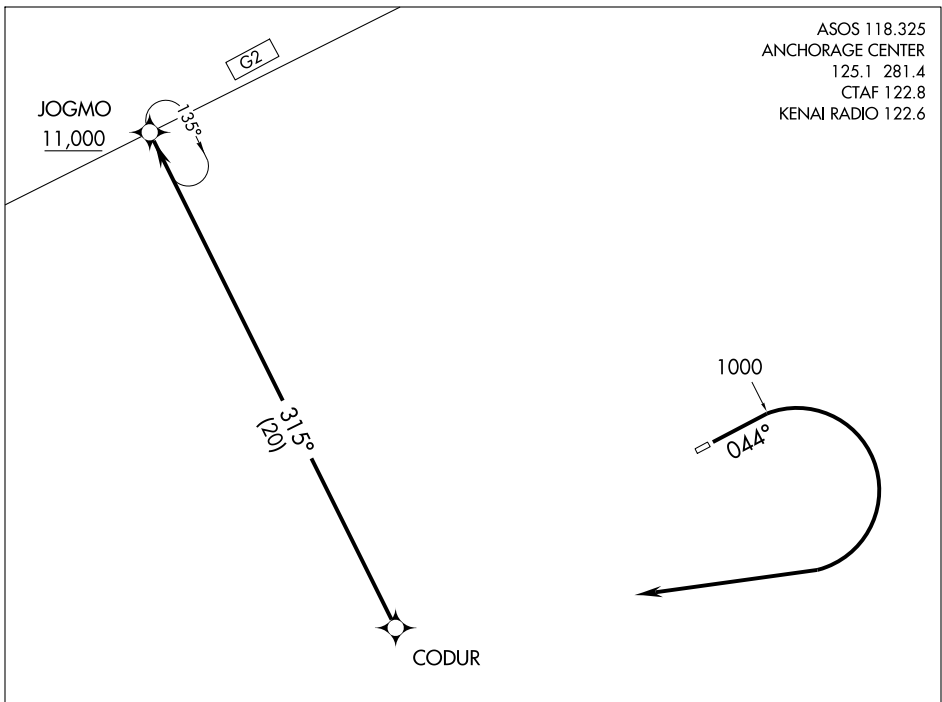


JOGMO ONE DEPARTURE (RNAV) (OBSTACLE)

AKHIOK (AKK) (PAKH)
AKHIOK, ALASKA

ASOS 118.325
ANCHORAGE CENTER
125.1 281.4
CTAF 122.8
KENAI RADIO 122.6



AK, 22 OCT 2009 to 17 DEC 2009

AK, 22 OCT 2009 to 17 DEC 2009

TAKE-OFF MINIMUMS

Rwy 4: Standard with a minimum (obstacle) climb of 450 feet per NM to 2200, or 2200-3 for climb in visual conditions. Climb in visual conditions NA at night.

Rwy 22: NA, obstacles.

NOTE:

- 1. GPS Required
- 2. RNAV 1

NOTE: Chart not to scale.



DEPARTURE ROUTE DESCRIPTION

TAKE-OFF RUNWAY 4: Climb via 044° heading to 1000, then via right turn direct CODUR WP, then right turn via 315° track to JOGMO WP, Thence
 Or climb in visual conditions to cross Akhiok Airport at or above 2200 southwest bound direct CODUR WP, then right turn via 315° track to JOGMO WP, Thence

. . . . Climb in holding, (if required) to cross JOGMO WP at or above 11,000 before proceeding via assigned route.

JOGMO ONE DEPARTURE (RNAV) (OBSTACLE)