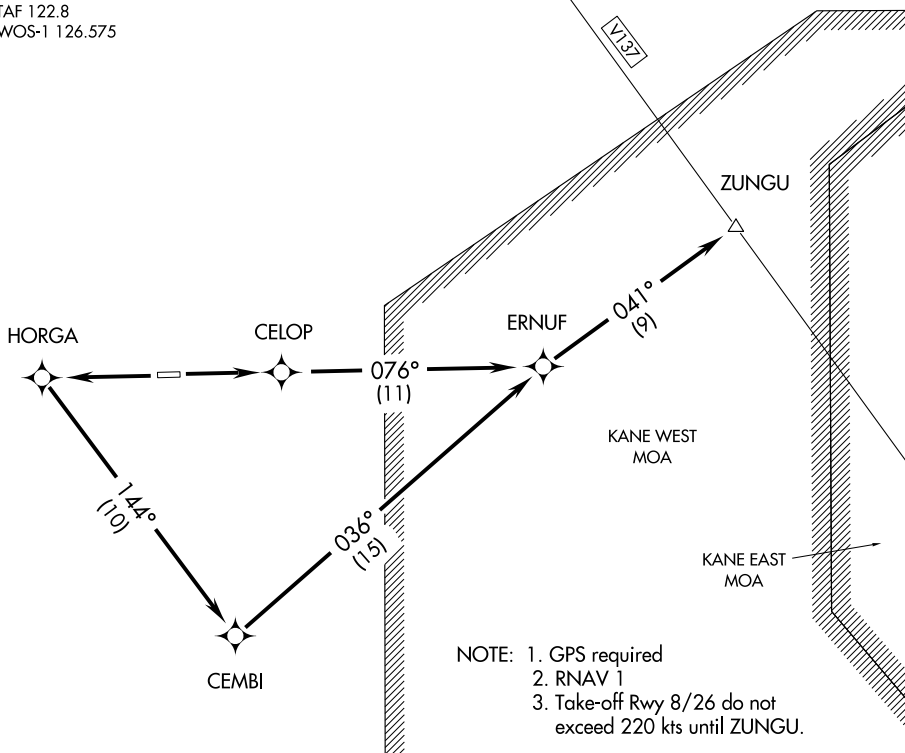


ZUNGU ONE DEPARTURE (RNAV) (OBSTACLE)

LOS ANGELES CENTER
128.6 291.7
CTAF 122.8
AWOS-1 126.575



- NOTE: 1. GPS required
2. RNAV 1
3. Take-off Rwy 8/26 do not exceed 220 kts until ZUNGU.

TAKE-OFF MINIMUMS

Rwy 8: Standard with a minimum climb of 335' per NM to 2000, do not exceed 220 kts until ZUNGU.

Rwy 26: Standard with a minimum climb of 465' per NM to 5000, do not exceed 220 kts until ZUNGU.

TAKE-OFF OBSTACLES

Rwy 8: Numerous trees beginning 2000' from departure end of runway on centerline, up to 75' AGL/875' MSL.

Rwy 26: Numerous trees beginning 1000' from departure end of runway, 400' left of centerline, up to 75' AGL/634' MSL.

NOTE: Chart not to scale.



DEPARTURE ROUTE DESCRIPTION

TAKE-OFF RUNWAY 8: Climb direct CELOP then via depicted route to ZUNGU.

TAKE-OFF RUNWAY 26: Climb direct HORGA, and left turn 144° track to CEMBI, then via depicted route to ZUNGU.