

RNAV (GPS) RWY 26

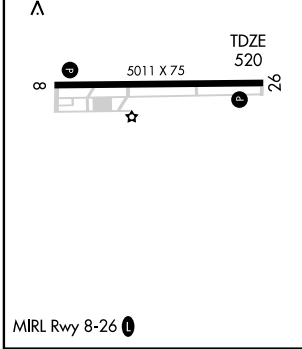
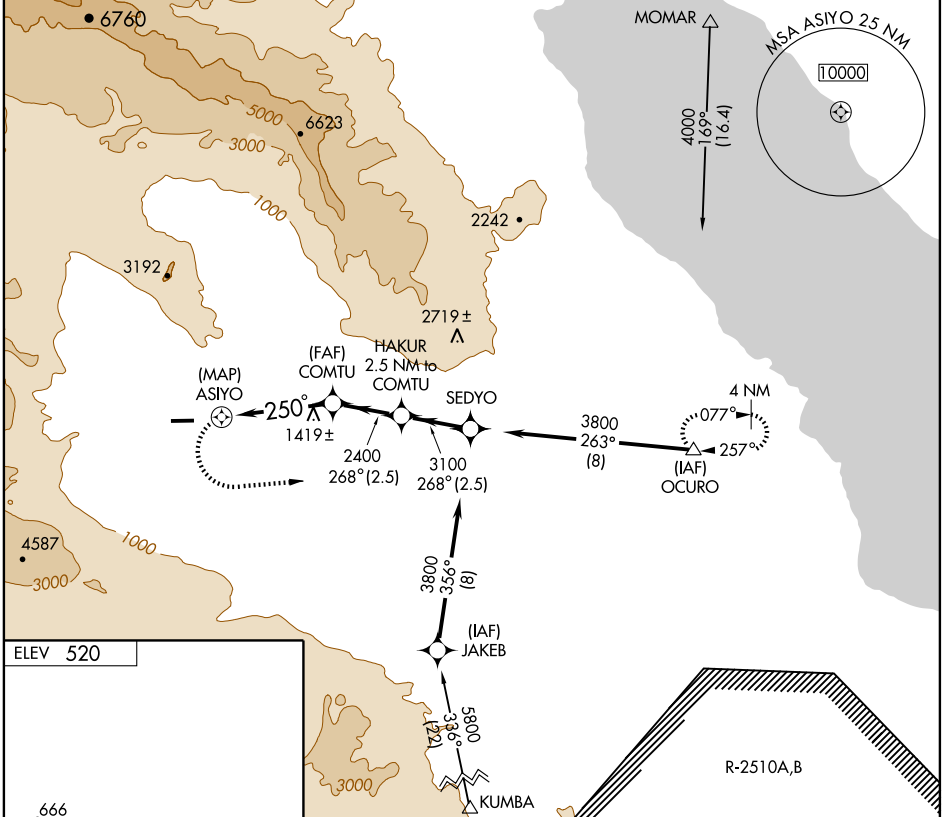
BORREGO VALLEY (L08)

APP CRS	Rwy Idg	5011
250°	TDZE	520
	Apt Elev	520

⚠ If local altimeter setting not received, use Imperial County altimeter setting and increase all MDAs 580 feet.
⚠ NA Circling not authorized south of Rwy 8-26.
 GPS or RNP-0.3 required. DME/DME RNP-0.3 NA.

MISSED APPROACH: Climbing left turn to 4000 direct OCURO WP and hold.

AWOS-1 126.575	LOS ANGELES CENTER 128.6 291.7	UNICOM 122.8 (CTAF) 0
--------------------------	--	---------------------------------



OCURO	* VDP not authorized with Imperial County altimeter setting. VGSI and descent angles not coincident.		HAKUR 2.5 NM to COMTU	SEDYO
	ASIYO	COMTU	SEDYO	
	2400	3100	3800	
	250°	268°		
	1 NM	2.6 NM	1.4 NM	2.5 NM

CATEGORY	A	B	C	D
LNAV MDA	1720-1¼ 1200 (1200-1¼)	1720-1½ 1200 (1200-1½)	1720-3	1200 (1200-3)
CIRCLING	1720-1¼ 1200 (1200-1¼)	1720-1½ 1200 (1200-1½)	1720-3	1200 (1200-3)

SW-3, 22 OCT 2009 to 19 NOV 2009

SW-3, 22 OCT 2009 to 19 NOV 2009