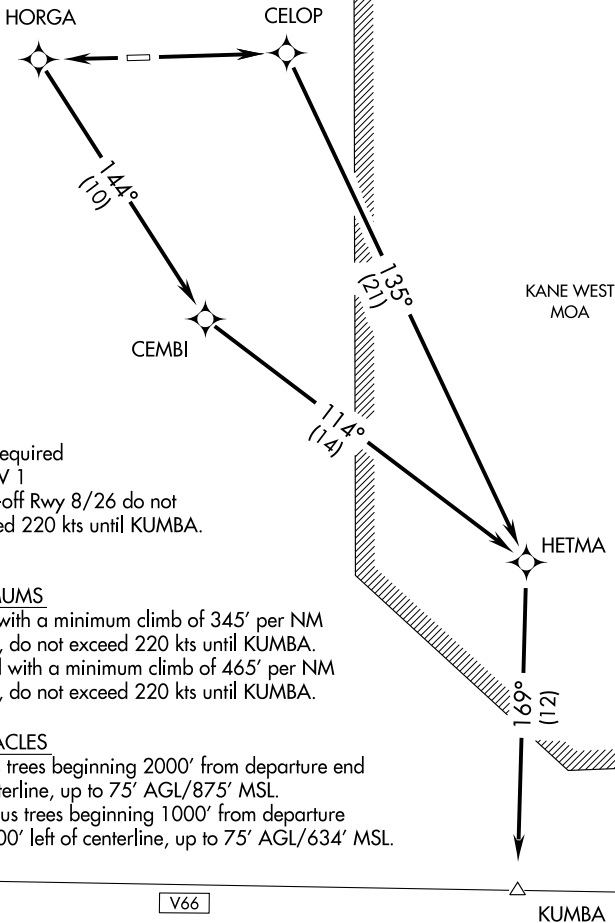


# KUMBA ONE DEPARTURE (RNAV)

LOS ANGELES CENTER  
128.6 291.7  
CTAF 122.8  
AWOS-1 126.575



- NOTE: 1. GPS required  
2. RNAV 1  
3. Take-off Rwy 8/26 do not exceed 220 kts until KUMBA.

### TAKE-OFF MINIMUMS

- Rwy 8: Standard with a minimum climb of 345' per NM to 5000, do not exceed 220 kts until KUMBA.  
Rwy 26: Standard with a minimum climb of 465' per NM to 5000, do not exceed 220 kts until KUMBA.

### TAKE-OFF OBSTACLES

- Rwy 8: Numerous trees beginning 2000' from departure end of runway on centerline, up to 75' AGL/875' MSL.  
Rwy 26: Numerous trees beginning 1000' from departure end of runway, 400' left of centerline, up to 75' AGL/634' MSL.

SW-3, 22 OCT 2009 to 19 NOV 2009

SW-3, 22 OCT 2009 to 19 NOV 2009

NOTE: Chart not to scale.

**DEPARTURE ROUTE DESCRIPTION**

TAKE-OFF RUNWAY 8: Climb direct CELOP then via depicted route to KUMBA.

TAKE-OFF RUNWAY 26: Climb direct HORG, and left turn 144° track to CEMBI, then via depicted route to KUMBA.