

# RNAV (GPS) RWY 29

PRESTON/ FILLMORE COUNTY (FKA)

APP CRS <b>286°</b>	Rwy Idg <b>4000</b>
	TDZE <b>1276</b>
	Apt Elev <b>1276</b>

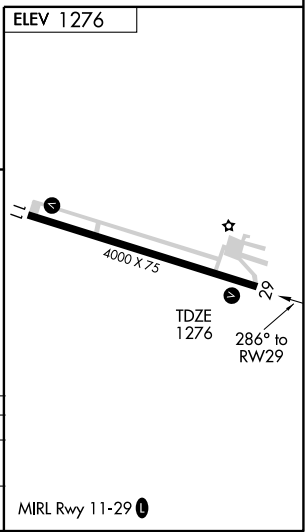
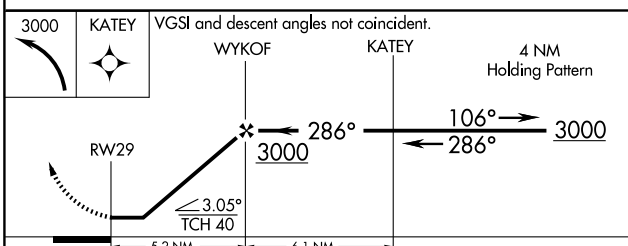
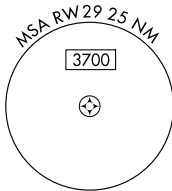
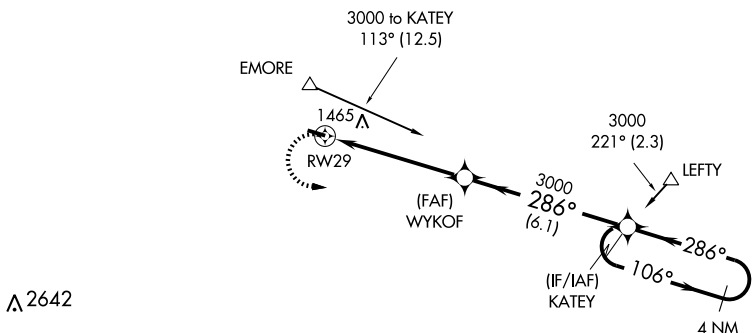
**⚠** When VGSI inoperative, procedure NA at night.  
**⚠** DME/DME RNP-0.3 NA. Visibility reduction by helicopters NA.  
 When local altimeter setting not received, use Rochester Intl altimeter setting and increase all MDAs 60 feet and LNAV and Circling Cat. C visibilities ¼ mile.

**MISSED APPROACH:** Climbing left turn to 3000 direct KATEY and hold

AWOS-3 <b>118.550</b>	ROCHESTER APP CON * <b>119.8 251.125</b>	CTAF <b>122.9</b>
--------------------------	---	----------------------

NC-1, 22 OCT 2009 to 19 NOV 2009

NC-1, 22 OCT 2009 to 19 NOV 2009



CATEGORY	A	B	C	D
LNAV MDA	1760-1	484 (500-1)	1760-1¼ 484 (500-1¼)	NA
CIRCLING	1760-1 484 (500-1)	1820-1 544 (600-1)	1820-1½ 544 (600-1½)	NA