

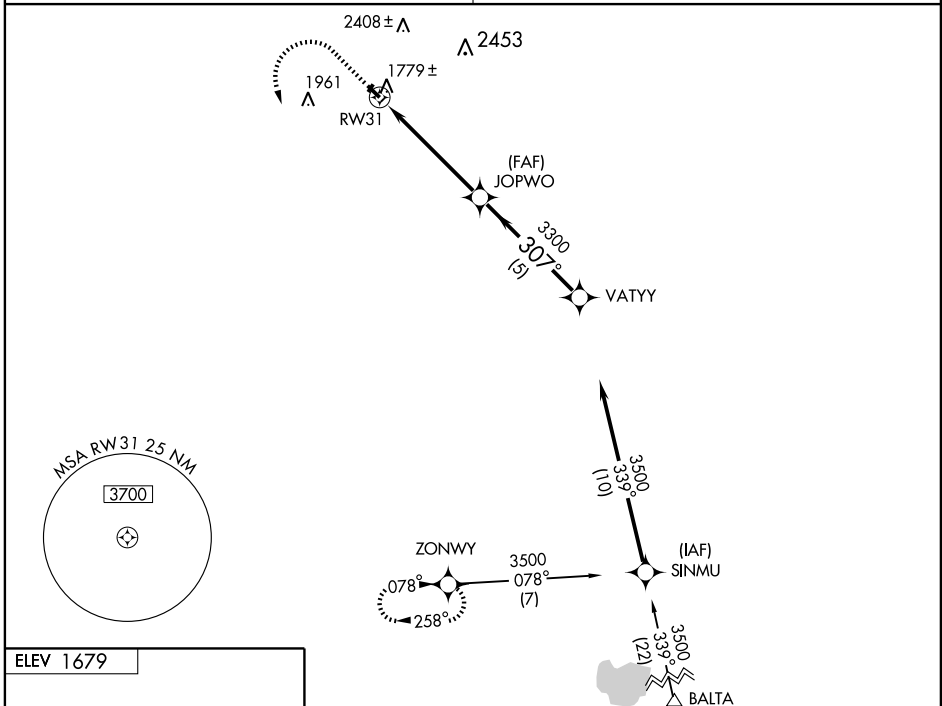
GPS RWY 31

BOTTINEAU MUNI (D09)

APP CRS	Rwy Idg	3700
307°	TDZE	1673
	Apt Elev	1679

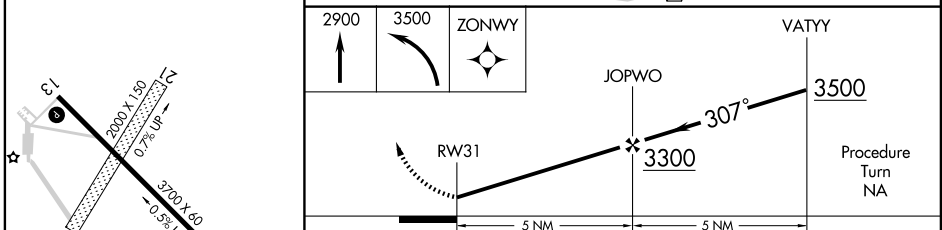
▼ Use Minot Air Force Base altimeter setting, if not received;
▲ NA use Devils Lake altimeter setting. MISSED APPROACH: Climb to 2900 then climbing left turn to 3500 direct ZONWY WP and hold.

MINOT APP CON * **119.6 363.8** UNICOM **122.8 (CTAF) 0**



NC-1, 22 OCT 2009 to 19 NOV 2009

NC-1, 22 OCT 2009 to 19 NOV 2009



CATEGORY	A	B	C	D
S-31	2140-1	467 (500-1)		NA
CIRCLING	2200-1	521 (600-1)		NA
DEVILS LAKE ALTIMETER SETTING MINIMUMS				
S-31	2240-1	567 (600-1)		NA
CIRCLING	2300-1	621 (700-1)		NA