

RNAV (GPS) RWY 23

TOWANDA/ BRADFORD COUNTY (N27)

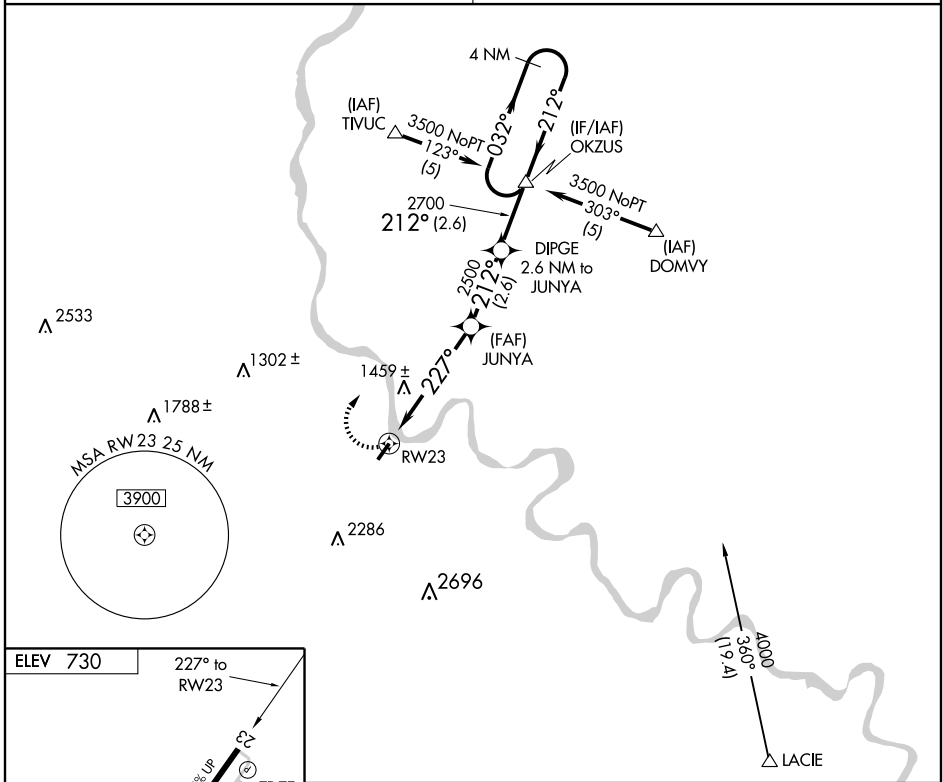
APP CRS 227°	Rwy Idg TDZE Apt Elev	4300 733 730
------------------------	-----------------------------	---

▼ Use Tri-Cities, NY altimeter setting
▲ NA GPS or RNP-0.3 required. DME/DME RNP-0.3 NA

MISSED APPROACH: Climbing right turn to 3500 direct OKZUS WP and hold.

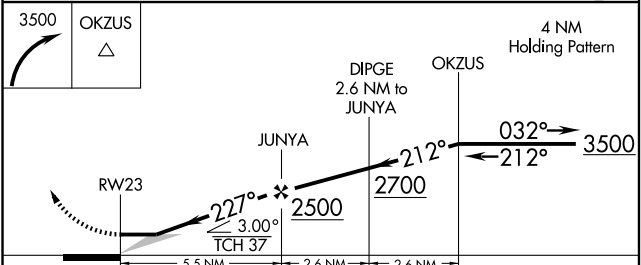
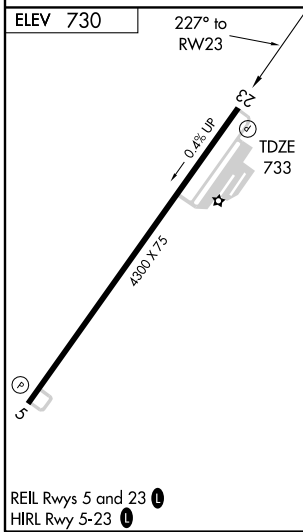
BINGHAMTON APP CON
118.6 257.625

UNICOM
123.0 (CTAF) 0



NE-4, 22 OCT 2009 to 19 NOV 2009

NE-4, 22 OCT 2009 to 19 NOV 2009



CATEGORY	A	B	C	D
RNAV MDA	1800-1¼ 1067 (1100-1¼)	1800-1½ 1067 (1100-1½)		NA
CIRCLING	2020-1¼ 1290 (1300-1¼)	2020-1½ 1290 (1300-1½)		NA