


RNAV (GPS) RWY 16

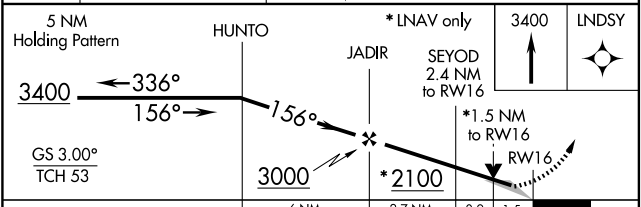
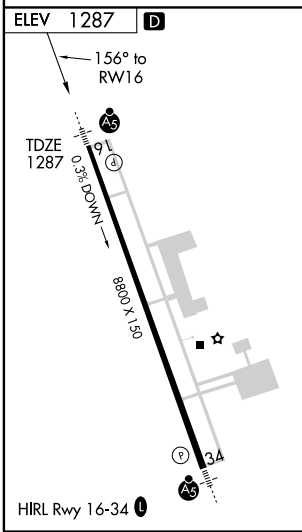
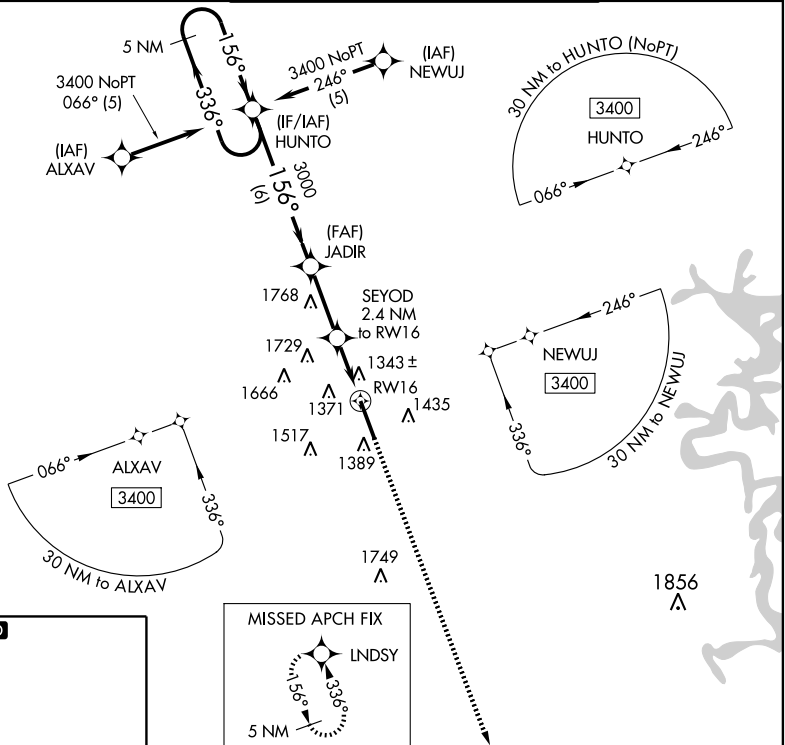
FAYETTEVILLE/ NORTHWEST ARKANSAS RGNL (X.N.A)

WAAS CH 72899 W16A	APP CRS 156°	Rwy Idg 8800 TDZE 1287 Apt Elev 1287
--	------------------------	---

⚠ DME/DME RNP-0.3 NA. For uncompensated Baro-VNAV systems, LNAV/VNAV NA below 17°C (2°F) or above 46°C (114°F). If local altimeter setting not received, use Smith Field altimeter setting and increase all DAs 38 feet and all MDAs 40 feet. Baro-VNAV NA and VDP NA when using Smith Field altimeter setting.

MALSR
 MISSED APPROACH: Climb to 3400 direct LNDY and hold.

ASOS 119.425	RAZORBACK APP CON * 121.0 244.57	NORTHWEST ARKANSAS RGNL TOWER * 127.1 (CTAF) 	GND CON 121.9
------------------------	--	--	-------------------------



CATEGORY	A	B	C	D
LPV DA	1537/24		250 (300-½)	
LNAV/VNAV DA	1693/50		406 (500-1)	
LNAV MDA	1800/24	513 (600-½)	1800/50	1800/60
CIRCLING	1800-1	513 (600-1)	1800-1½	1840-2
			513 (600-1½)	553 (600-2)

SC-1, 22 OCT 2009 to 19 NOV 2009

SC-1, 22 OCT 2009 to 19 NOV 2009