


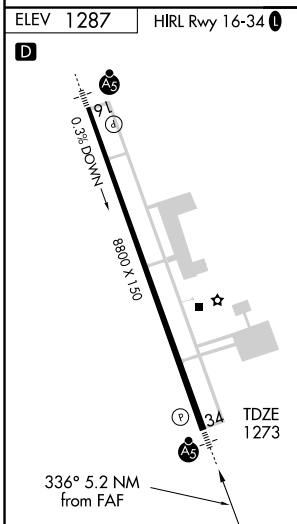
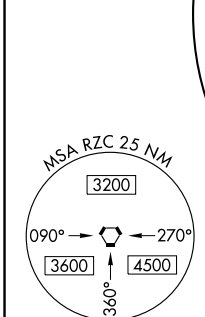
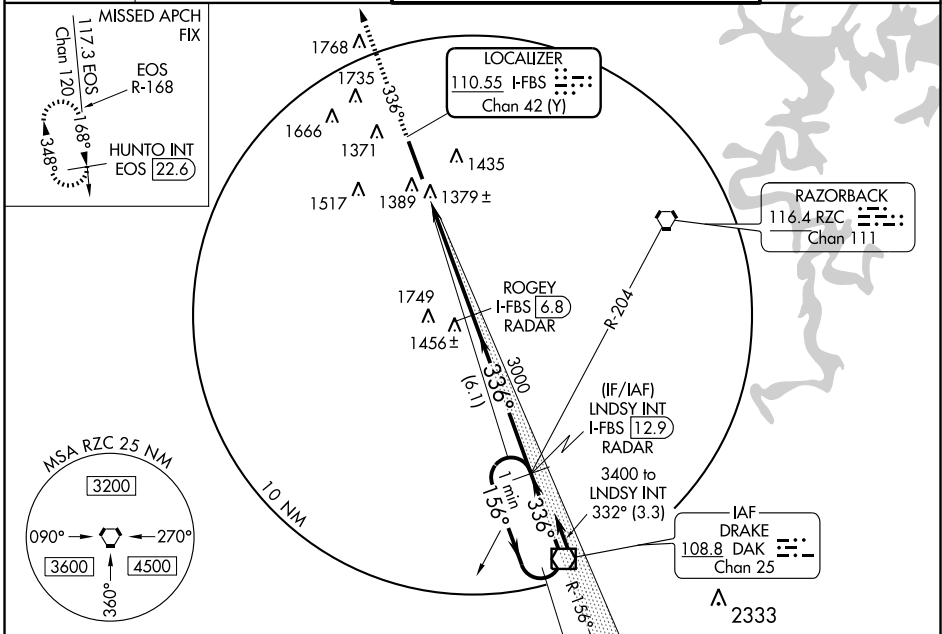
LOC/DME I-FBS <b>110.55</b> Chan <b>42 (Y)</b>	APP CRS <b>336°</b>	Rwy Idg TDZE Apt Elev	<b>8800</b> <b>1273</b> <b>1287</b>
--	------------------------	-----------------------------	---

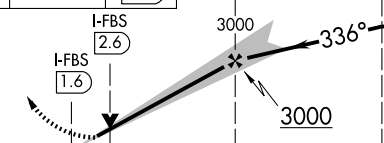
# ILS or LOC/DME RWY 34

FAYETTEVILLE/NORTHWEST ARKANSAS RGNL (X.N.A)

<p><b>▼</b> VDP NA when using Smith Field altimeter setting. *RVR 1800 authorized with the use of FD or AP or HUD to DA. <b>▲</b> When local altimeter setting not received, use Smith Field altimeter setting and increase all DA/MDA 40 feet, and increase S-LOC 34 Cat C visibility 1/4 mile.</p>	<p><b>MALSR</b>  </p>	<p><b>MISSED APPROACH:</b> Climb to 3400 via heading 336° and EOS R-168 to HUNTO INT/EOS 22.6 DME and hold.</p>
--	--	---

<p>ASOS <b>119.425</b></p>	<p>RAZORBACK APP CON * <b>121.0 244.57</b></p>	<p>NORTHWEST ARKANSAS RGNL TOWER * <b>127.1 (CTAF) 0</b></p>	<p>GND CON <b>121.9</b></p>
--------------------------------	--	--	---------------------------------



ELEV 1287 HIRL Rwy 16-34		DME REQUIRED			
3400	Hdg 336° and EOS R-168	HUNTO INT EOS 22.6	ROGEY I-FBS 6.8 RADAR	LNSDY I-FBS 12.9 RADAR	One Minute Holding Pattern
		<p>156° → 3400 ← 336°</p> <p>VGSI and ILS glidepath not coincident. GS 3.00° TCH 55</p>			
CATEGORY	A	B	C	D	
S-ILS 34	*1473/24 200 (200-1/2)				
S-LOC 34	1640/24 367 (400-1/2)			1640/40 367 (400-3/4)	
CIRCLING	1720-1 433 (500-1)	1740-1 453 (500-1)	1740-1 1/2 453 (500-1 1/2)	1840-2 553 (600-2)	

SC-1, 22 OCT 2009 to 19 NOV 2009

SC-1, 22 OCT 2009 to 19 NOV 2009