

HUSLIA, ALASKA

AL-9273 (FAA)

RNAV (GPS) RWY 3

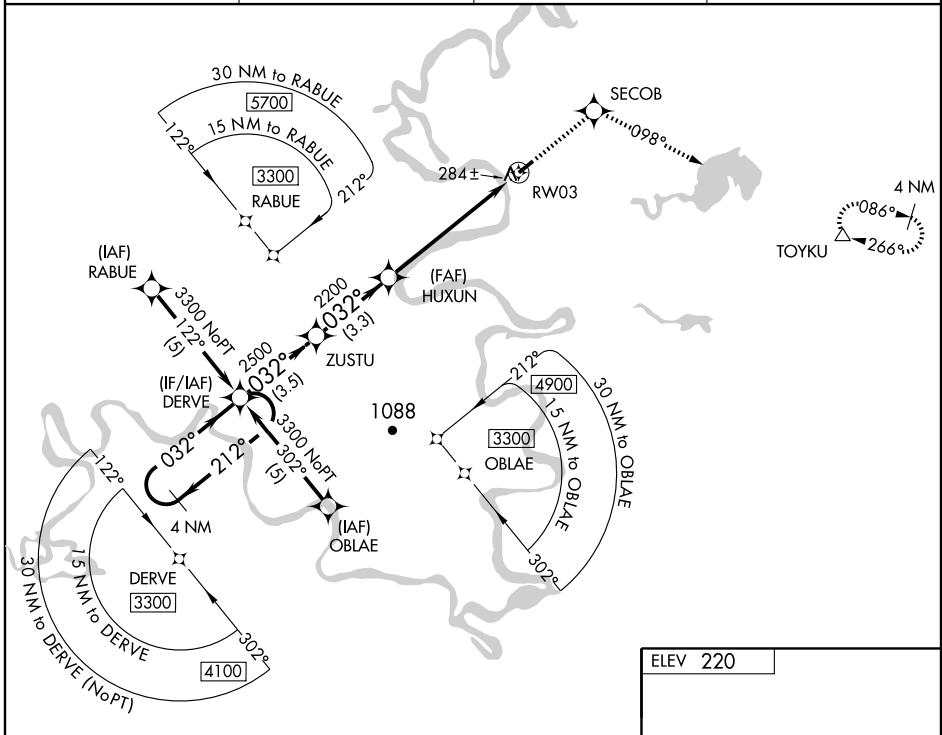
HUSLIA (HLA)(PAHL)

WAAS CH 42608 W03A	APP CRS 032°	Rwy ldg TDZE Apt Elev	4000 220 220
--	------------------------	-----------------------------	---

▼ For uncompensated Baro-VNAV systems, LNAV/VNAV NA below -25°C (-13°F) or above 48°C (118°F). Visibility reduction by helicopters NA. DME/DME RNP-0,3 NA.

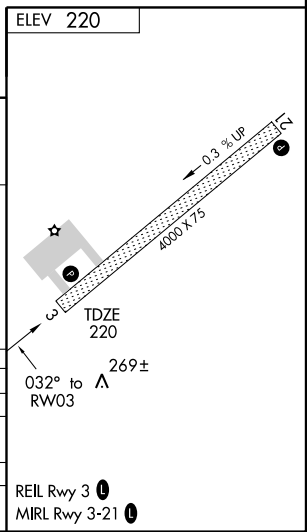
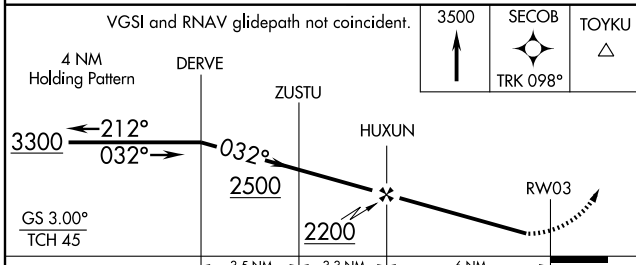
MISSED APPROACH: Climb to 3500 direct SECOB and via 098° track to TOYKU and hold, continue climb-in-hold to 3500.

AWOS-3 135.75	ANCHORAGE CENTER 127.0 290.2	FAIRBANKS RADIO 122.4	UNICOM 122.8 (CTAF) 0
-------------------------	--	---------------------------------	--



AK, 22 OCT 2009 to 17 DEC 2009

AK, 22 OCT 2009 to 17 DEC 2009



CATEGORY	A	B	C	D
LPV DA	525-1 305 (400-1)			
LNAV/VNAV DA	567-1¼ 347 (400-1¼)			
LNAV MDA	540-1 320 (400-1)			
CIRCLING	600-1 380 (400-1)	680-1 460 (500-1)	680-1½ 460 (500-1½)	780-2 560 (600-2)

HUSLIA, ALASKA
Amdt 2 08269

65°42' N-156°21' W

HUSLIA (HLA)(PAHL)

RNAV (GPS) RWY 3